



SYDNEY COASTAL COUNCILS GROUP Inc.

PO Box 999,
Manly NSW 1655
ABN: 39 638 876 538

19 October 2021

Dear Greater Sydney Harbour Coastal Management Program (GSHCMP) Steering Committee and Partners Group,

We hope that you're keeping well. The GSHCMP Project Team has been busy and is delighted to share this latest update with you:

NSW Coastal and Estuary Grants Program funding success

As you will remember from our July 2021 update, the Project Team, in consultation with DPIE-EES Greater Sydney Branch, prepared an application for funding under the [NSW Coastal and Estuary Grants Program](#). The multi-council proposal focussed on managing threats to water quality from the catchments and building on the issues raised over many years from studies that have documented contaminants in these areas. The proposal was successful and has been awarded \$274,000 to support 20 local councils joining forces to protect Sydney Harbour.

The [Sydney Coastal Councils Group](#) (SCCG), as an incorporated entity and serving as a Regional Organisation of Councils (ROC), will administer the grant in association with the [Parramatta River Catchment Group](#) (PRCG).

The project received positive media with Parliamentary Secretary for the Environment and Member for North Shore Felicity Wilson stating, *"councils linked by the Greater Sydney Harbour catchment area have come together for the first time ever to pool resources and work towards a whole of catchment plan to protect Sydney Harbour. This is the largest collaboration of councils to receive a NSW Government planning grant, and we are excited to see this group work together to improve and strengthen Sydney Harbour."*

The announcement confirms the focus of the grant, building on the work of the PRCG. Many thanks to the 20 councils within the Greater Sydney Harbour Catchment that have contributed to this wonderful project:

- | | |
|--------------------------------|----------------------------------|
| 1. Waverley Council | 11. Blacktown City Council |
| 2. Willoughby City Council | 12. Burwood Council |
| 3. Woollahra Municipal Council | 13. City of Canada Bay Council |
| 4. Inner West Council | 14. Canterbury Bankstown Council |
| 5. Northern Beaches Council | 15. Cumberland Council |
| 6. North Sydney Council | 16. Municipality of Hunters Hill |
| 7. Ku-ring-gai Council | 17. City of Ryde |
| 8. Hornsby Shire Council | 18. City of Parramatta |
| 9. City of Sydney | 19. Hills Shire Council |
| 10. Mosman Municipal Council | 20. Lane Cove Council |

A New Project Governance structure developed

A new project governance structure, co-designed with councils and agencies, has been established (see Figure 1). The structure consists of:

- Project Management Committee (PMC) - provides overall coordination, direction, support and oversight. There are representatives from PRCG, SCCG, Transport for NSW, DPIE-EES, EPA, Sydney Water, and NSW Coastal Council. It is chaired by Prof. Thom, NSW Coastal Council.
- Council Partners Group - receives progress reports from the PMC, offers advice on capacity of councils to provide cost-effective actions and disseminates information to relevant council staff. This Groups consists of 20 senior Council representatives and is chaired by Prof. Thom, NSW Coastal Council.
- Project Control Group (PCG) - provides day-to-day project management of consultants, financial management, coordination of resources, processes and systems, liaison between governance bodies, and is the key point of contact. The PCG consists of senior representatives from SCCG, PRCG, DPIE Environment Energy and Science (DPIE EES) and the Chair of the PMC and PCG (Prof. Thom). It is chaired by Sarah Joyce, SCCG.
- Consultant(s) – are engaged to deliver projects funded by the grant. They are required to regularly report to PCG and engage with individual organisations and committees as required.

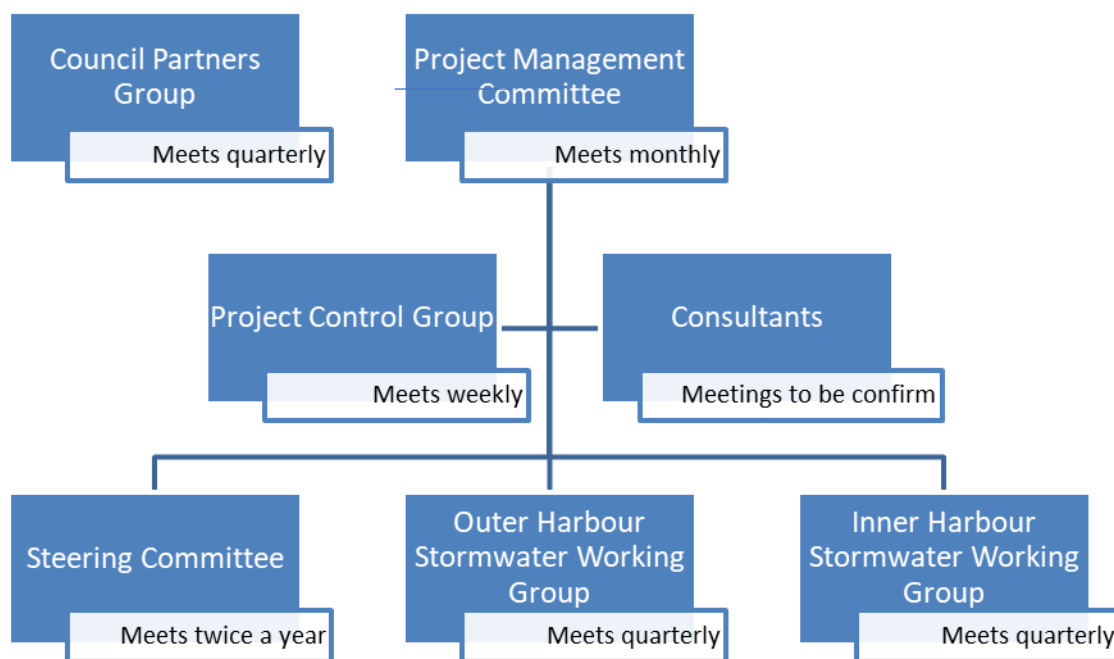


Figure 1: Project Governance Structure and Meeting Frequency

Our Steering Committee will continue which currently includes representatives from 21 agencies and organisations. Each representative acts as a principal point of contact for their organisation, facilitating communications within their own organisations on the project progress. The Steering Committee receives information on progress, offers advice with respect to the interests of their organisation, identifies opportunities and assists in resolving impediments to delivery of the project. It is chaired by Prof. Thom, NSW Coastal Council. Membership includes:

- Commonwealth Department of Defence
- Destination NSW

- Department of Planning, Industry and Environment - Crown Lands division
- Department of Primary Industries – Fisheries
- Greater Sydney Commission
- Greater Sydney Local Land Services
- National Parks and Wildlife Services
- Office of Local Government
- Ports Authority
- Metro Local Aboriginal Land Councils
- Gamay Sea Rangers
- Harbour City Ferries
- Sydney Olympic Park Authority
- Sydney Opera House Trust
- Australian National Maritime Museum
- Sydney Harbour Federation Trust
- Committee for Sydney
- Captain Cook Cruises
- Sydney Fish Market
- National Road and Motorists' Association
- Western Sydney Leadership Dialogue

Two Stormwater Working Groups provide technical advice to the Project Control Group and consultants, represent the councils' and their communities' interests, facilitate information requests, disseminate project outputs to relevant staff within its council and assist in any future funding applications to the NSW Coastal and Estuary Grants Program and other relevant programs. Membership of the Stormwater Working Groups consists of:

- Outer Harbour Working Group - Northern Beaches, North Sydney, Willoughby, Waverley, Woollahra Council, Inner West, City of Sydney, Hornsby, Mosman Councils
- Inner Harbour Working Group - Canada Bay, Burwood, Canterbury-Bankstown, Cumberland, Parramatta, Blacktown, Ryde, Hunters Hill, Ku-ring-gai, Lane Cove, The Hills Councils.

Current project status

Consistent with the recommendations of the Greater Sydney Harbour Coastal Management Program [Stage 1 Scoping Study](#), the Project Control Group is currently finalising the Description of Services to undertake Stage 2 investigations into stormwater management.

The overarching objective of Stage 2 is to enable councils, Sydney Water and relevant state agencies, to collaborate more effectively in the management of urban stormwater and marine litter and in so doing address community values and expectations.

Stage 2 will consist of two separate but interrelated studies of stormwater management in each participating LGA:

- **Study 1** will collect all information relevant to stormwater from each participating LGA; and
- **Study 2** will assess the needs, costs and benefits of management options against social, environmental, and economic metrics for each participating Council.

The consultant(s) engaged for these studies will detail and consider relevant plans with state agencies, any proposed modifications to planning instruments, climate change projections, and opportunities and constraints to coordinate stormwater and litter management in a more holistic and strategic, catchment-wide approach. The project will also involve an evaluation of the need for a coordinating entity for Greater Sydney Harbour to improve efficiency and cost-effectiveness of stormwater management

Investigating Ways to Improve Waterway Health Management

The SCCG and PRCG continue to investigate ways to improve the management of waterway health including ways to strengthen planning instruments and the application of DPIE's LEP Assessment Tool for waterway clauses. This is an important step in applying the [NSW Government's Risk-based Framework](#) and the selection of appropriate indicators relevant to both ecological and public health.

The GSHCMP Project Team has also been actively assembling information that will assist the consultant(s) with data collection for Stage 2, and has prepared a detailed scope (Description of Services) for the Stage 2 studies. For example, SCCG recently applied [DPIE's Local Environment Plan \(LEP\) Assessment Tool for Waterway Clauses](#) to seven councils in the Greater Sydney Harbour catchment to complete a review of the content of water related clauses in Local Environment Plans. The tool can also assess if council's stated zone objectives are appropriate and comprehensive given the water-related requirements in the clauses themselves, and whether they are responsive to the priorities and issues of your community.

The Strategic Review of Marine Litter

The SCCG and PRCG are continuing to progress their strategic review of marine litter in the catchment funded by the NSW Environment Protection Authority (EPA). The Regional Litter Prevention Strategy (RLPS) is being piloted in three councils. Progress to date includes meeting key stakeholders, visiting littering hot spot areas in some of the catchment areas, collating littering data and identifying litter prevention actions in consultation with Council staff and community groups. A community perception survey around littering and littering behaviour was completed in August and results are informing the priority actions in the RLPS. A draft RLPS is being finalised and endorsed by partners and will be out for public consultation in early November. The project will finish by the end of 2021. Further information on the RLPS is available [here](#).

Smart Acceleration Program

The SCCG and PRCG have submitted an Expression of Interest under DPIE's Smart Acceleration program in partnership with CSIRO, EPA, Sydney Olympic Park Authority and six councils. This project will examine technologies for improving monitoring of stormwater using Artificial intelligence (AI) to track litter in waterways.

There are multiple benefits of using AI to accelerate the detection and classification of rubbish in our waterways; Councils can react more quickly to improve the quality of water than if done manually and there are related improvements for the safety of the maintenance and operation staff.

If successful, this pilot project will seek opportunities to roll-out this technology more broadly. The outcomes of the pilot will also be built into the Greater Sydney Harbour Coastal Management Program and Greater Sydney Harbour Regional Litter Prevention Strategy, which both PRCG and SCCG are partnering to deliver.

Ongoing communiques

We will continue to release communiques on an as-needs basis to keep you updated on the progress of our work. The latest information regarding the Greater Sydney Harbour CMP can be found on the SCCG's web-site [here](#) please feel free to share this link within your organisation.

Best wishes,

A handwritten signature in black ink, appearing to read 'B Thom', with a long horizontal flourish extending to the right.

Prof. Bruce Thom
Chair, Greater Sydney Harbour CMP Steering Committee