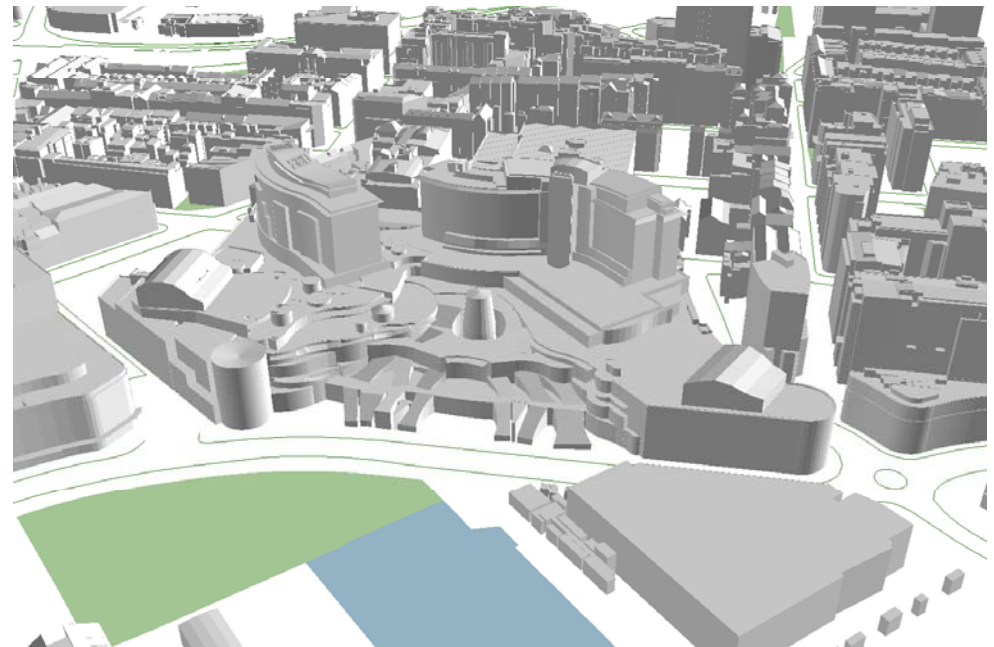


City of Sydney 3D model

- Have the physical model for management of the City
- Acquired the digital data in 2008
- Now implementing and developing the tools to do it electronically



Drivers

- Statutory Planning
 - Assessment of significant development applications at an individual site level
 - Assessment of larger, estate type developments (many sites)
- Strategic Planning
 - Assessment of large, precinct developments
 - Visualisation of changes to statutory envelopes (height controls, building envelopes)
- City Projects
 - Visualisation of streetscape and precinct wide developments
 - Assessment of catchment and district requirements
- City Works
 - Visualisation of street and streetscape upgrades
- Constituents
 - Dissemination of appropriate information relating to the above

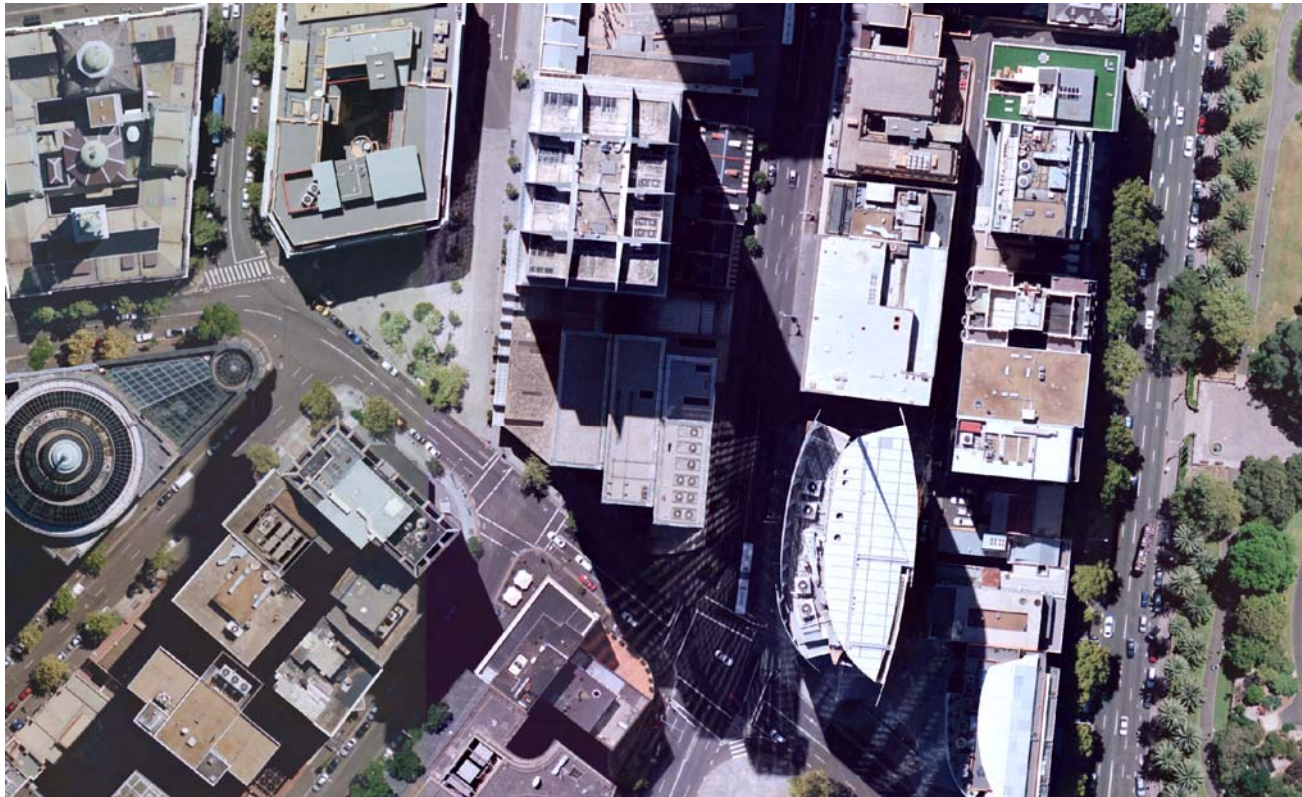
What is the model?

- Aerial Photography
 - ‘True’ Ortho-photography
 - Ortho-photography
- Built Form Model
- Oblique Photography
- LiDAR data



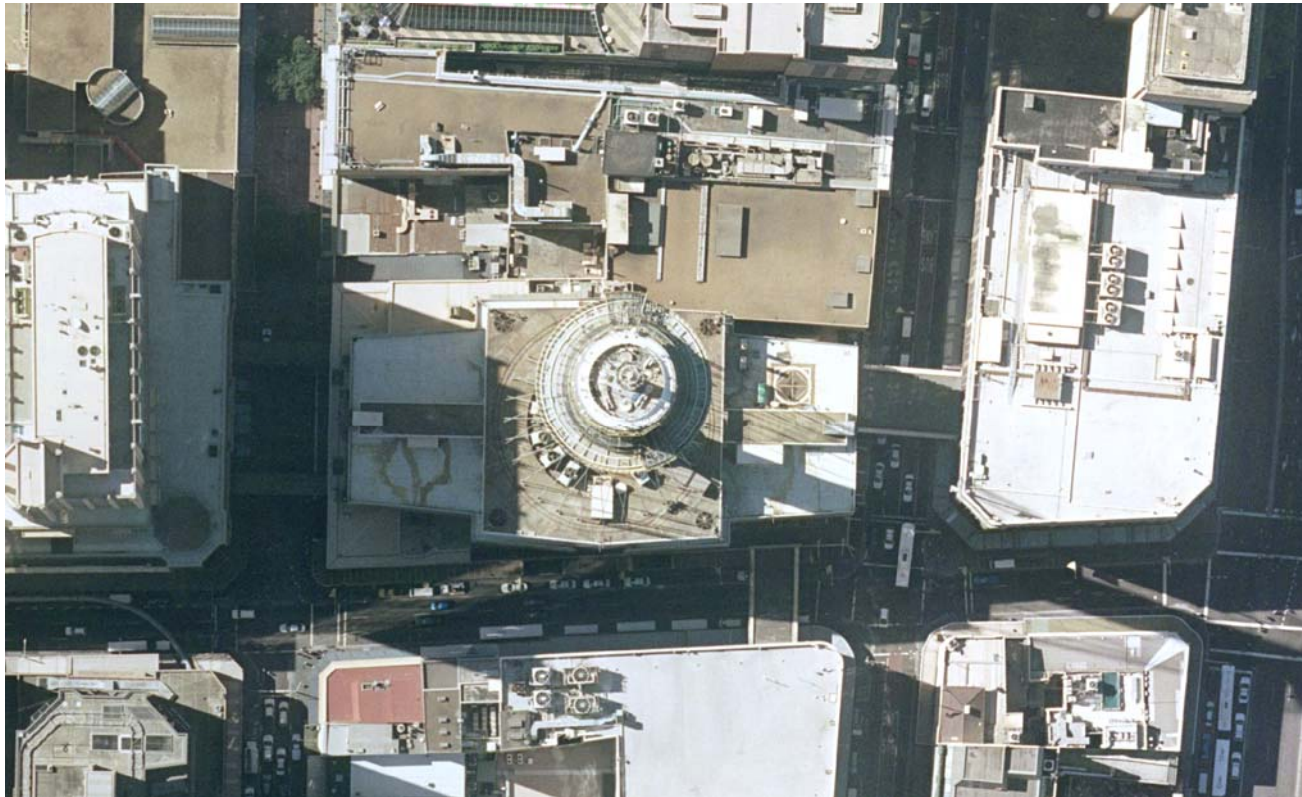
Sustainable Sydney

**Let's make Sydney
green, global and connected.**



Sustainable Sydney

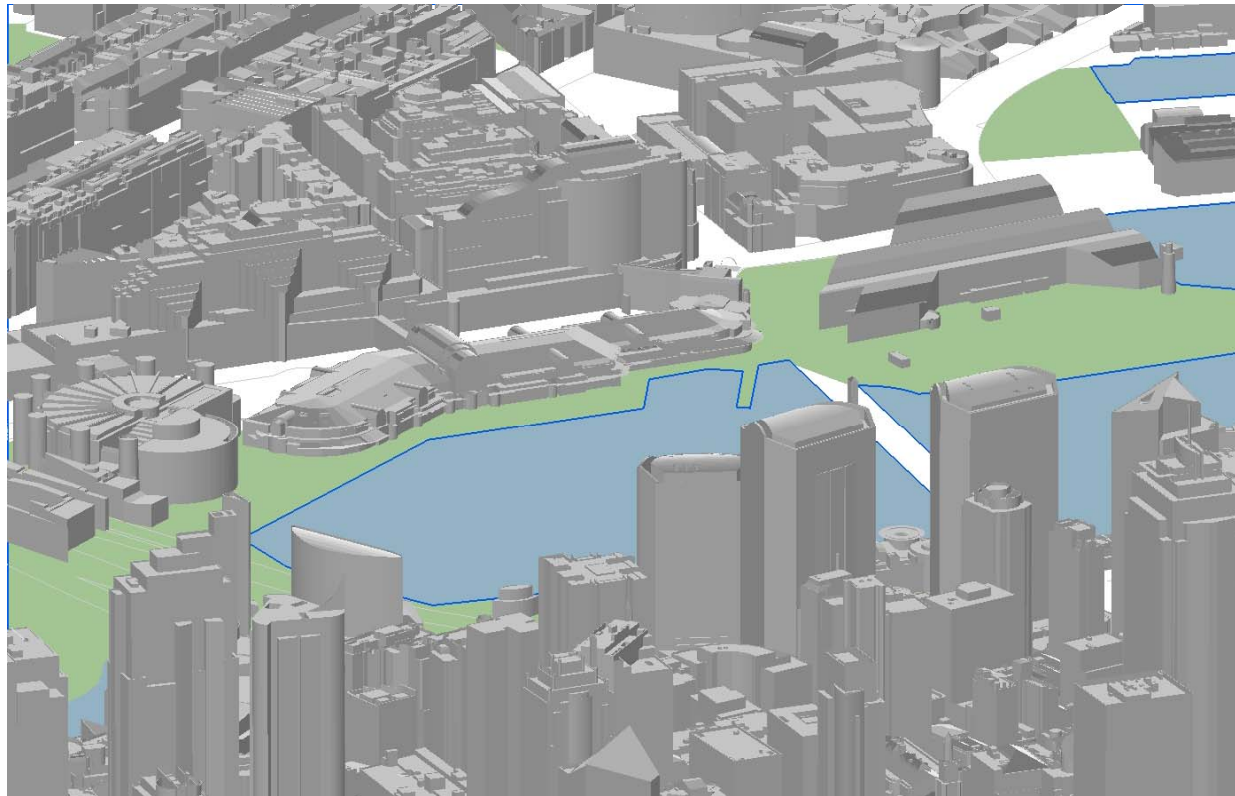
**Let's make Sydney
green, global and connected.**



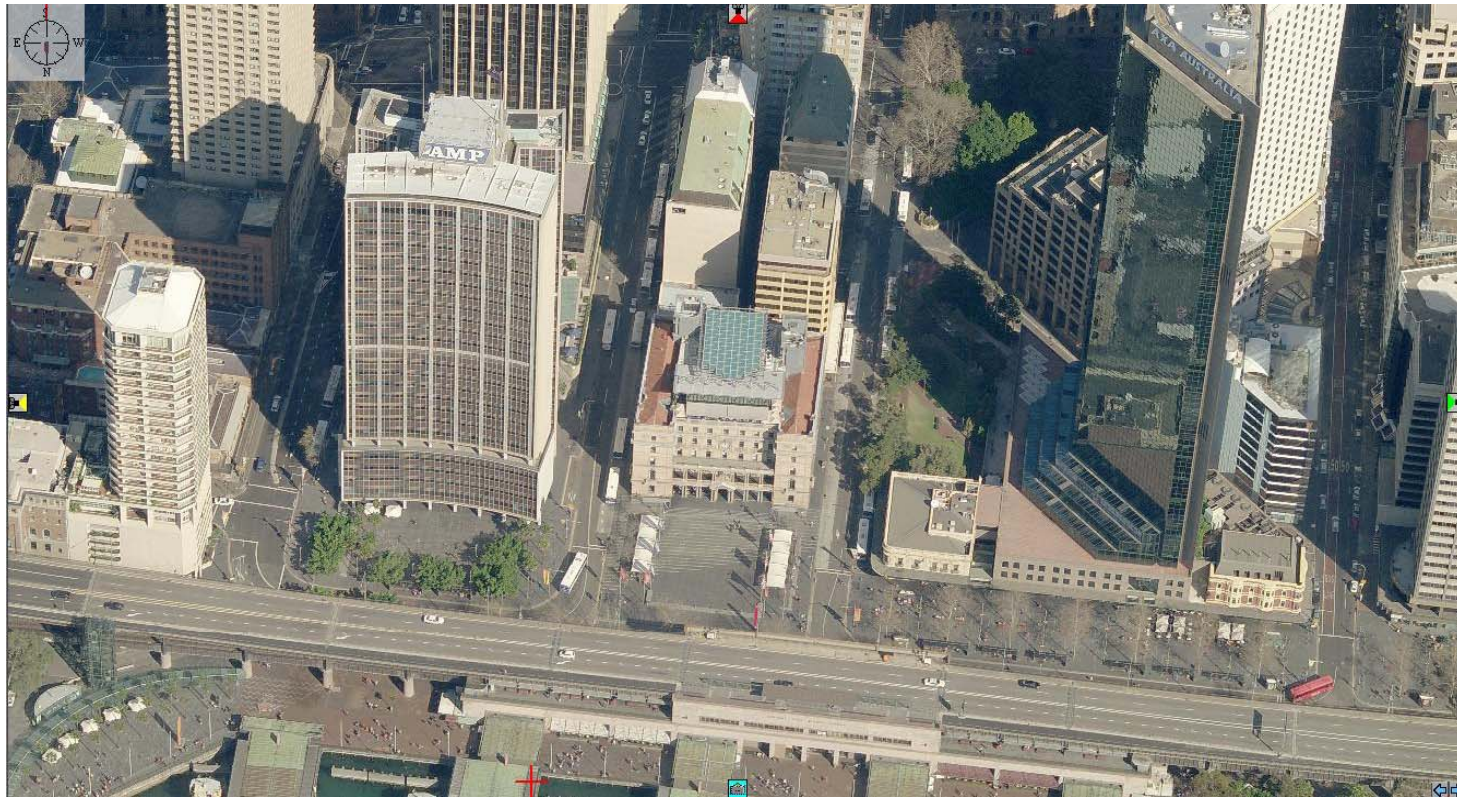
Sustainable Sydney

**Let's make Sydney
green, global and connected.**

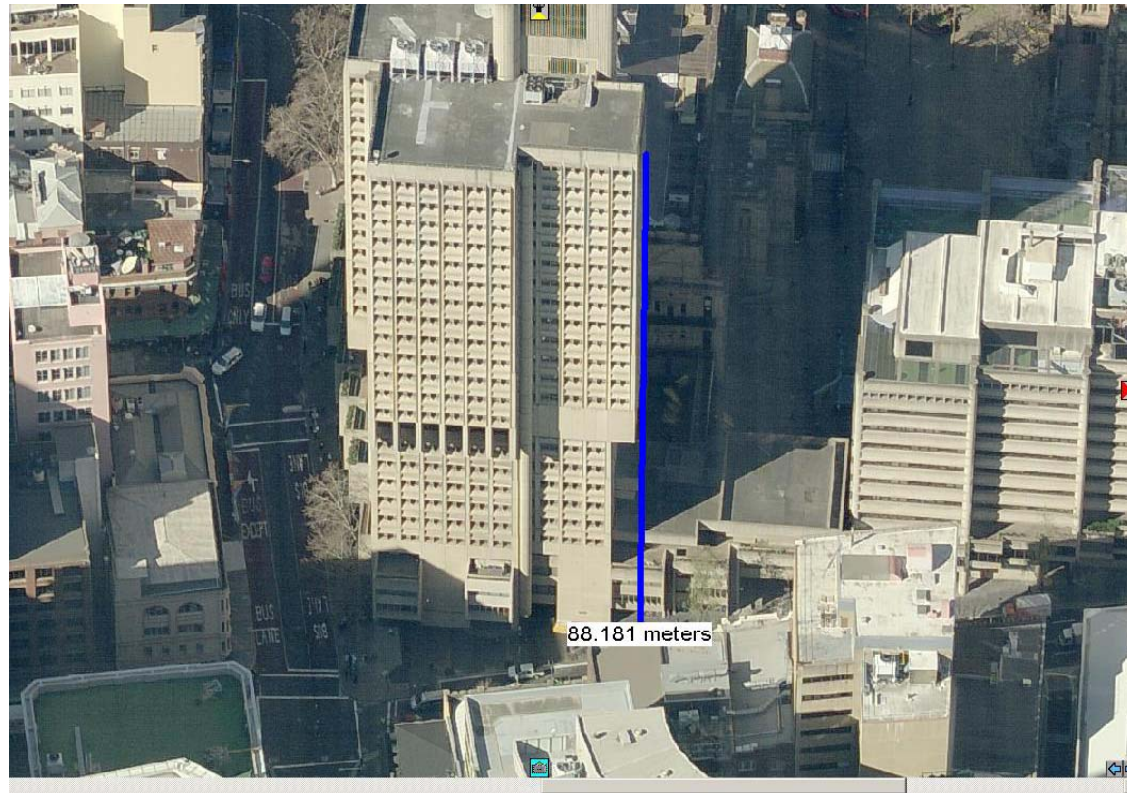




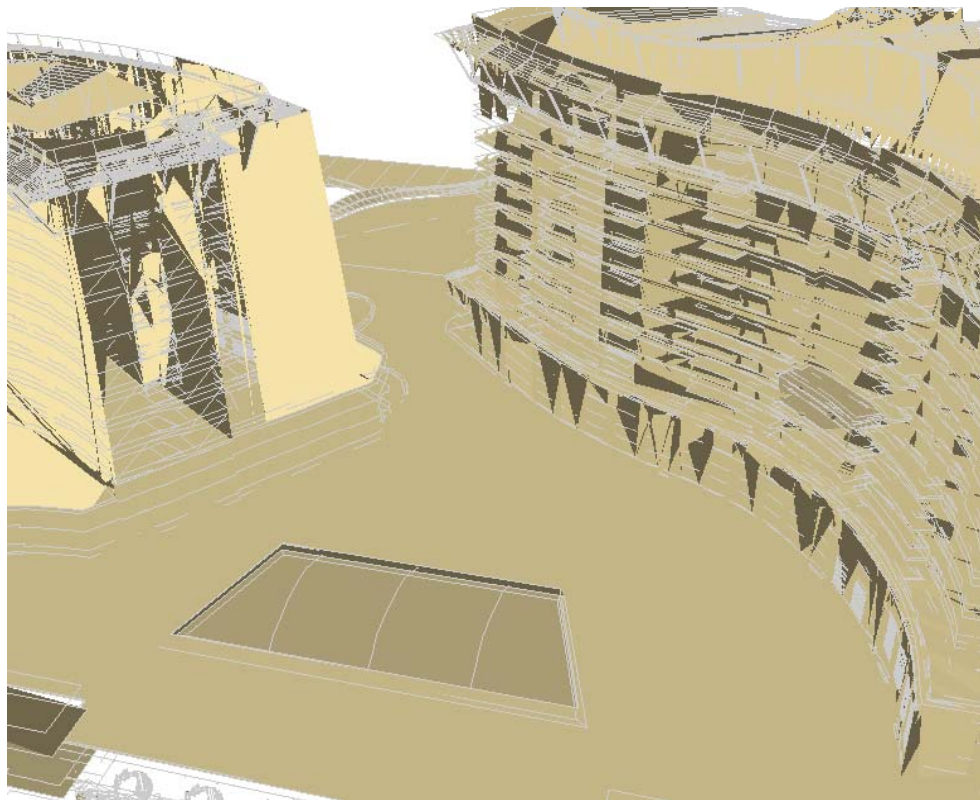


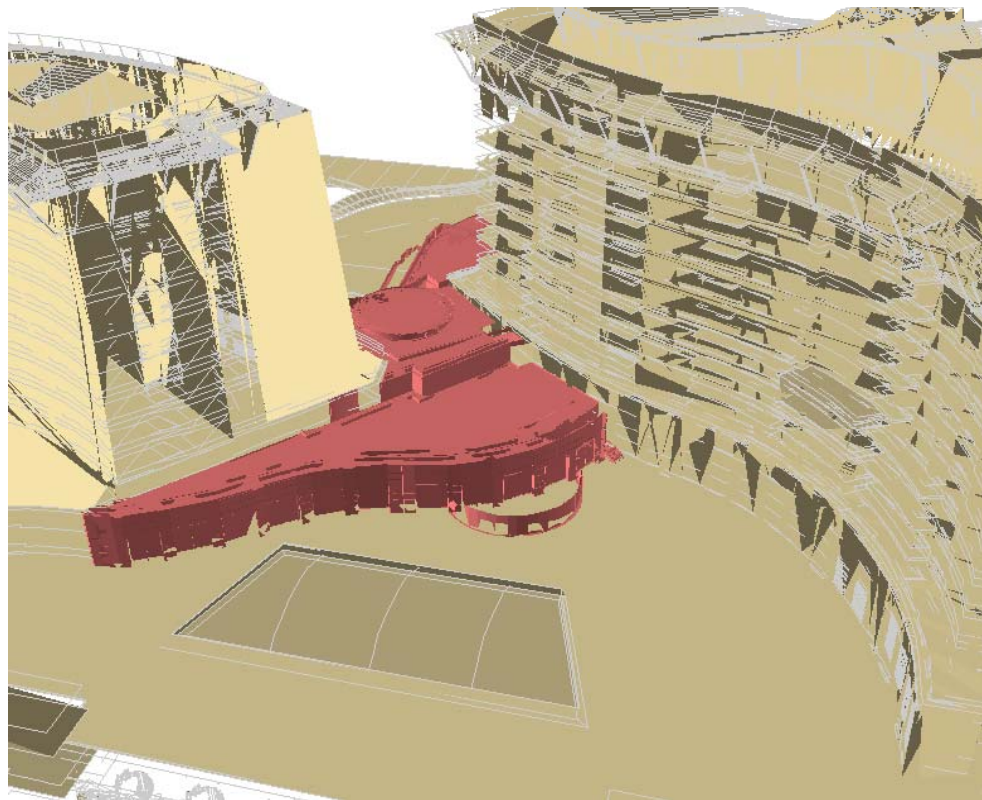


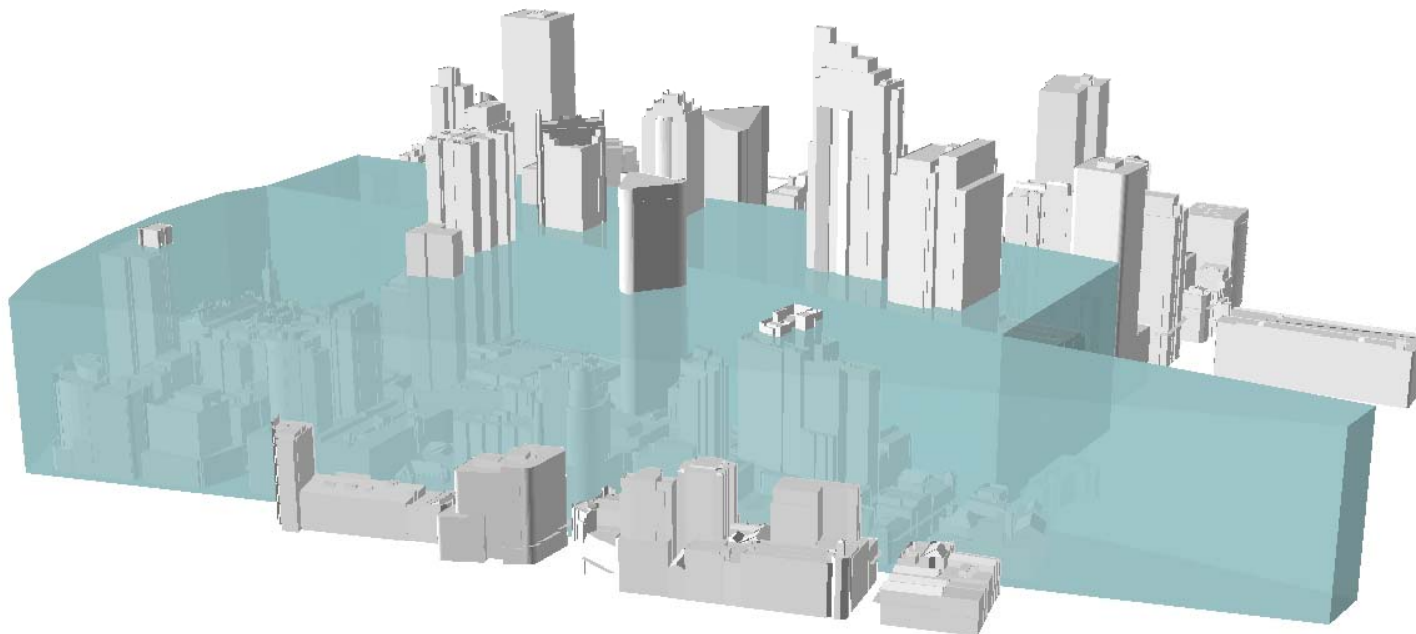


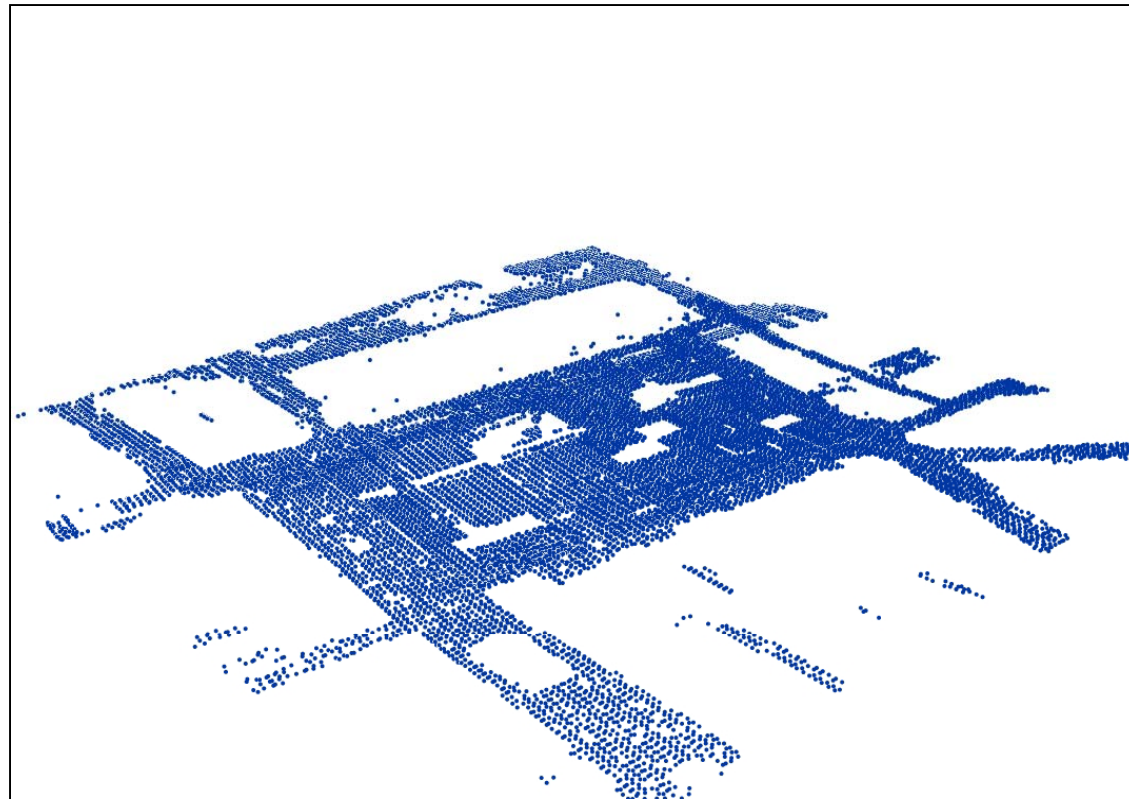


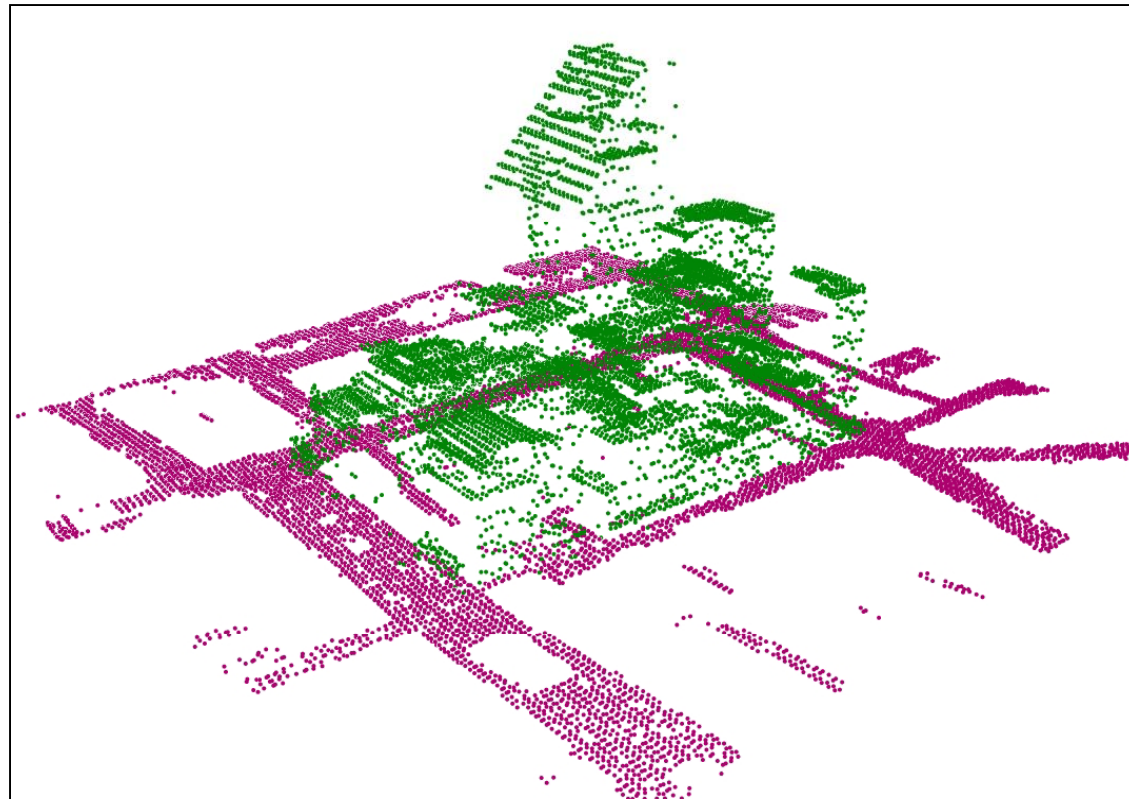


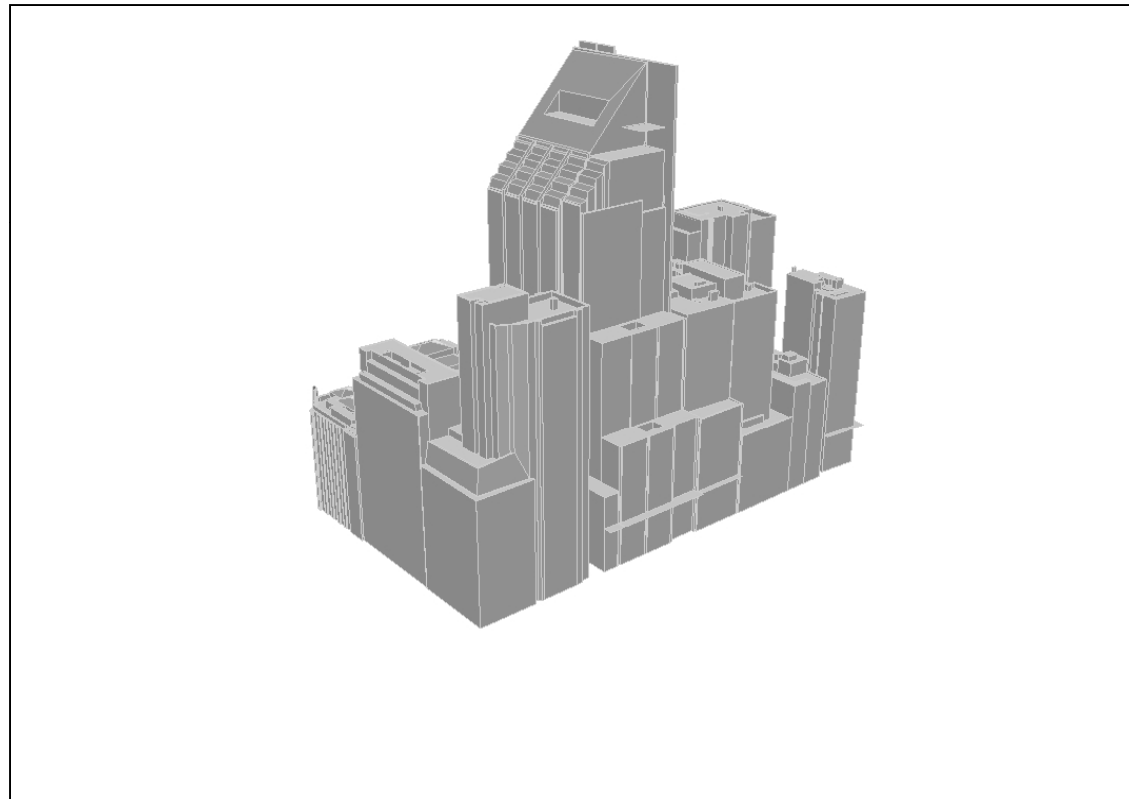


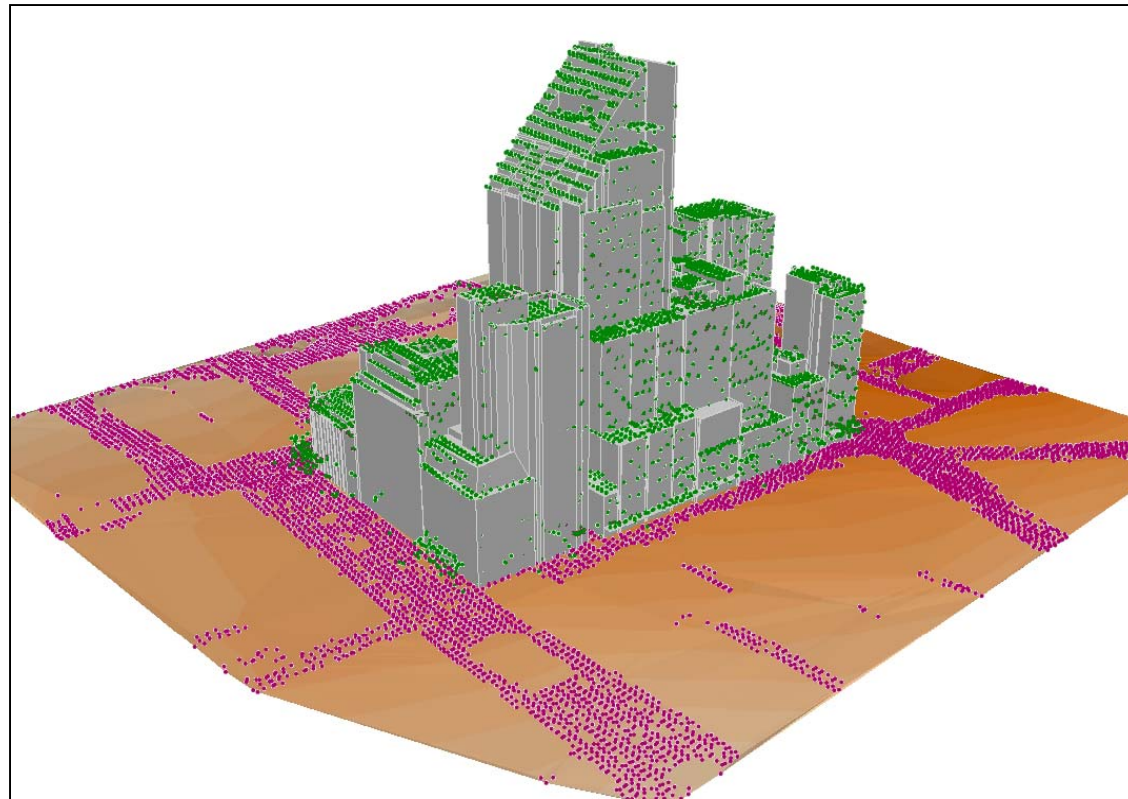










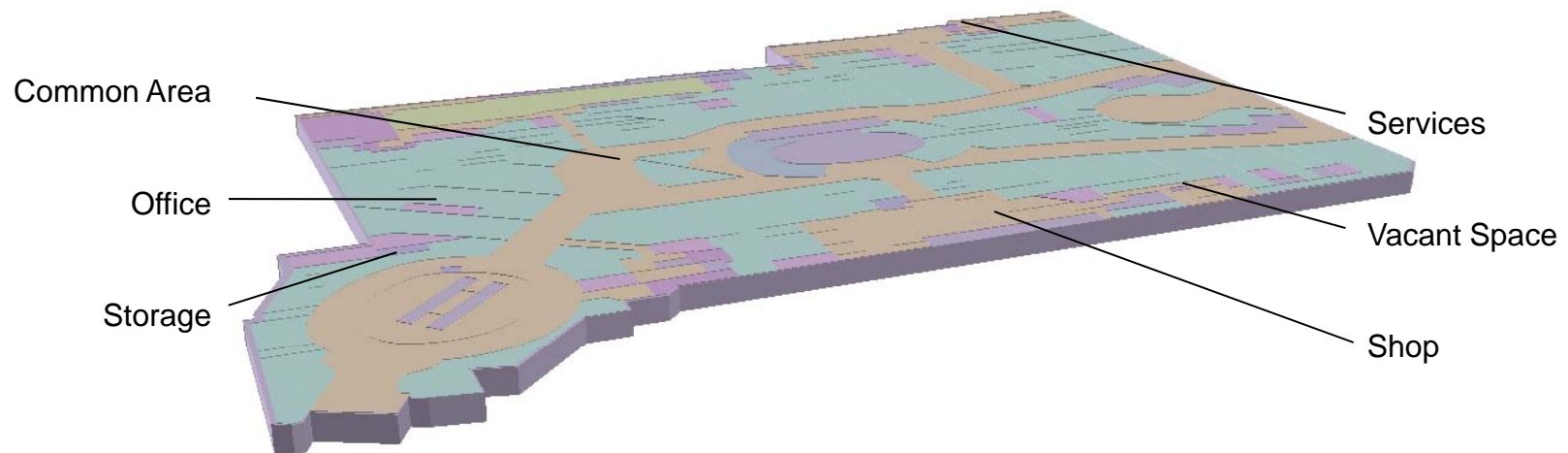


Next steps

- Visualisation software tender complete, about to be released
 - Browser based (external)
 - Customers
 - Constituents
 - Browser based (internal)
 - Staff
 - Councillors
 - etc
 - Desktop – Assessment
 - Ability to visualise new developments, real time
 - Desktop Analysis
 - Assess change in policy
 - Determine opportunities
 - Data owner/manipulator
 - Load new models of proposed development
 - Maintain core dataset
 - Analysis

Next steps

- Integrate to existing datasets & systems



Greg Livingstone

Asset Strategy and Systems Manager

glivings@cityofsydney.nsw.gov.au

Phone 9246 7572

Mobile 0414 617 073

Matthew Dobson

Spatial Information Co-ordinator

mdobson@cityofsydney.nsw.gov.au

Phone 9265 9482

Mobile 0411 324 472