



Planning

# Update of Central & Hunter Coasts LiDAR Project

## Current e-Planning Initiatives

*Sydney Coastal Councils Group GIS Forum  
Sydney  
9 December 2009*

John Hudson  
Director Sustainable Systems

# Central & Hunter Coasts LiDAR Project - Update



High resolution terrain mapping of the  
NSW Central and Hunter coasts for  
assessments of potential climate change  
impacts



Final project report

# Central & Hunter Coasts LiDAR Project - Update

- Project was completed in **May 2008**  
<http://www.planning.nsw.gov.au/PlansforAction/Coastalprotection/Climat eChangeMappingProject/>
- State & Local Government Forum held in **August 2008**  
<http://www.lgsa-plus.net.au/www/html/2600-lidar-workshop.asp>
- **CRC SI EOI July 2009**  
Development of Inundation Layers from LiDAR Data (SKM)
  - Sinclair Knight Merz awarded contract and reported in August 2009
  - Study found incomplete filtering of ground & non ground LiDAR returns plus ground data included returns from water
  - Generation of hydrologically enforced and conditioned DEM using automated, semi-automated processing with manual refinement



**Planning**

# **Joint Department of Planning and NSW Local Government & Shires Associations**

## **e-Planning Projects**

## E-Planning Projects

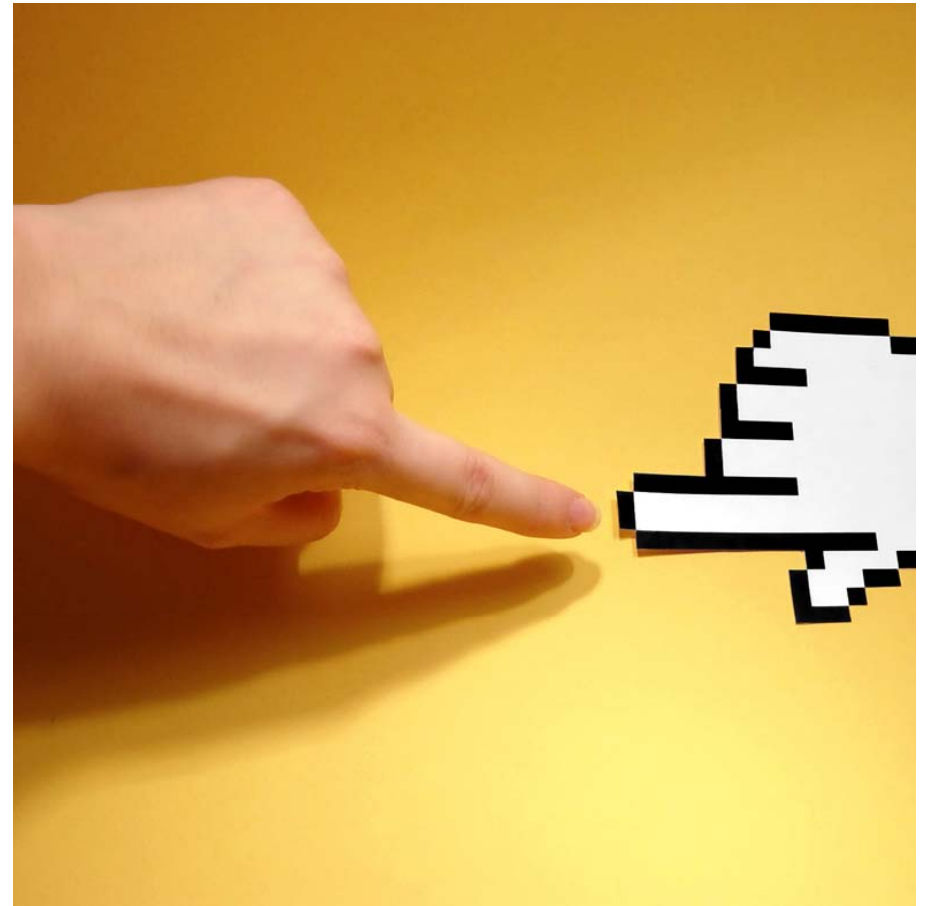
Department of Planning &  
NSW LGSA ePLanning projects:

- e-Planning Roadmap (by early 2010)
- electronic Housing Code (eHC) Project (mid 2010)
- electronic Development Application Interoperability Specifications (eDAIS) Project
- “Planning Channel” on SiX

<http://www.planning.nsw.gov.au/PlanningSystem/ImprovingthePlanningSystem/EPlanningforNSW/tabid/107/Default.aspx>

# What do we mean by e-Planning?

- e-Planning is:
  - the use of technology-based tools and systems
  - to connect business processes
  - which deliver improved planning information, services and outcomes
  - to the community



# What are we setting out to achieve?



Provide a vision for ePlanning in the State of NSW and an over-arching strategy and implementation plan for the on-going use of planning services on-line for the next 5 years.

## The Roadmap future... now

- Alignment with current Local Government strategic planning timetables
  - 10-year vision
  - 4-year strategic delivery program
  - Iterative 12-month implementation and review cycles
- A “living” process with governance, implementation and monitoring components





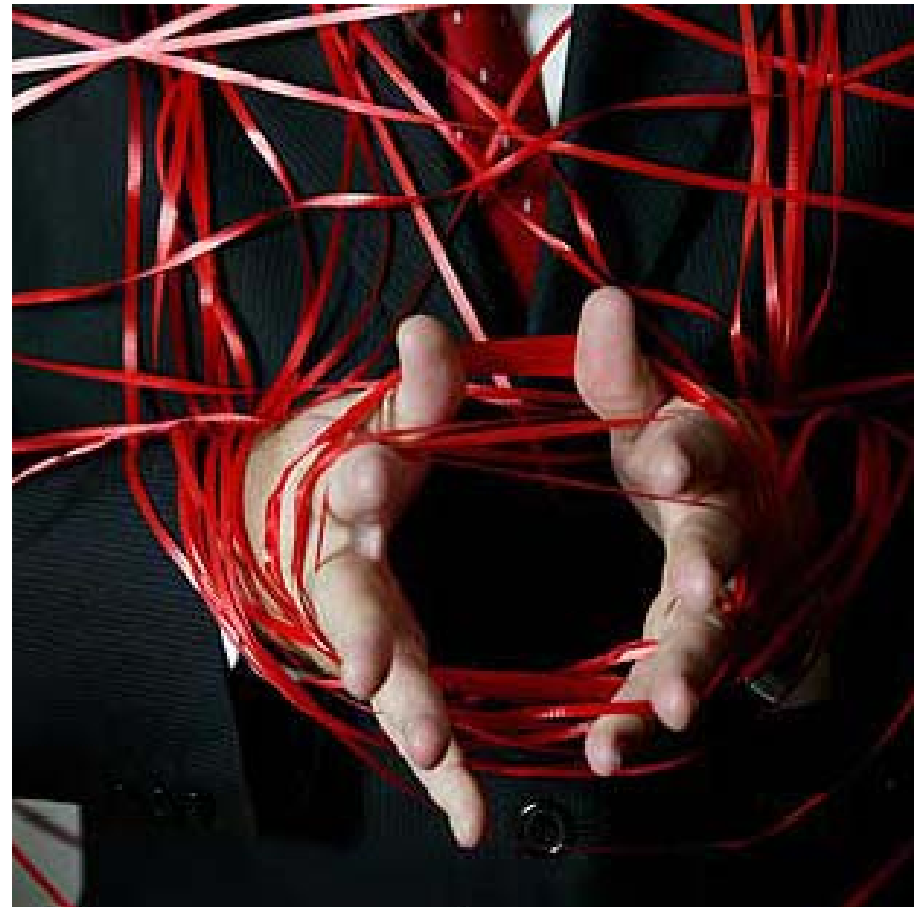
## Feature project: Electronic Housing Code

- NSW pilot project under the federal Housing Affordability Fund (HAF)
- A shared, integrated platform for end-to-end processing of development applications:
- The initiative will specifically target applications made under the NSW Housing Code during the pilot phase



# Feature project: Electronic Housing Code

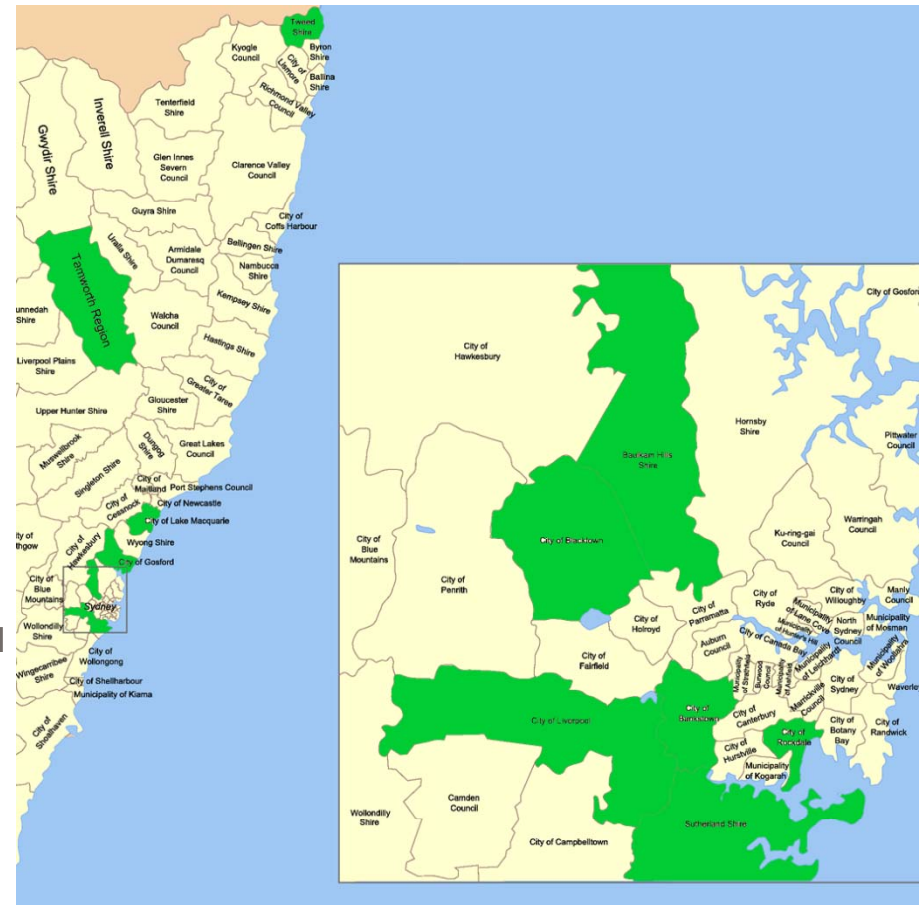
- The pilot will demonstrate:
  - How to fast-track approval processes
  - Contributing to housing affordability
  - Through time and cost savings
  - By reducing the resources needed to prepare, monitor and evaluate applications



# EHC Role Model Councils

• 12 Role Model Councils have been selected to participate in the project

- Bankstown City Council
- Blacktown City Council
- Gosford City Council
- Lake Macquarie City Council
- Liverpool City Council
- Port Macquarie-Hastings Council
- Rockdale City Council
- Shellharbour Council
- Sutherland Shire Council
- Tamworth Regional Council
- The Hills Shire Council
- Tweed Shire Council



# EHC Role Model Certifiers

- A group of Role Model Certifiers will also be involved in the pilot
- Benefits for Role Model Certifiers include:
  - Delivery of better customer service for applicants for Housing Code development
  - Better quality applications
  - Streamlined effort for Housing Code development leading to potentially significant cost savings for certifiers
  - Better access to user-friendly information on Housing Code development and local planning instruments
  - Industry recognition as a Role Model Certifier



# EHC pilot and the Housing Code

- Why use the Housing Code for the pilot?
  - A case study to demonstrate the end-to-end processes and the systems that support them
  - Create an electronic environment where the Housing Code 'rules' will be delivered by a common set of processes and protocols to make an application.
  - Identify aspects of the Code which need to be reviewed from the perspective of making consistent, real-world applications.
  - A continuous improvement cycle for the Code, and a more sophisticated and flexible policy setting in general.



# EHC pilot outcomes

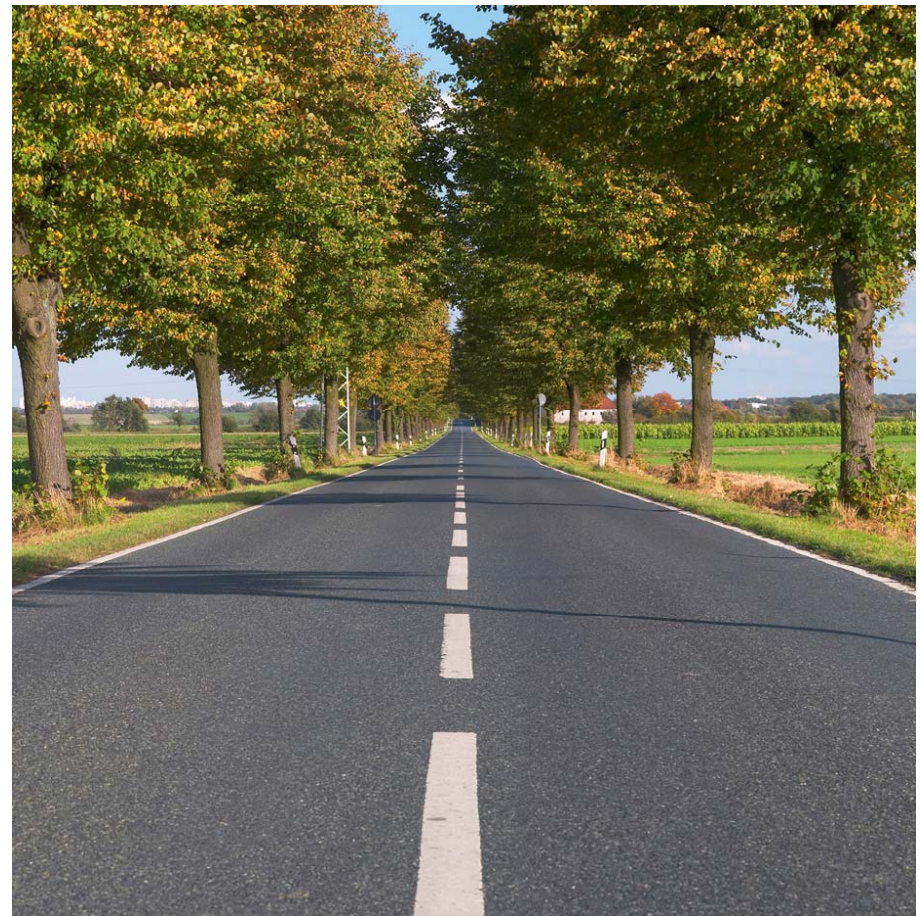
- Outcomes expected from the pilot include
  - A demonstrable online platform for application queries, lodgement and determination.
  - Electronic lodgement and assessment workflow for exempt and complying development for Role Model Councils and Certifiers.
  - A knowledge program on the benefits of standardised e-Planning practices
  - An independent assessment of the pilot and transferability of the results to non-pilot stakeholders.



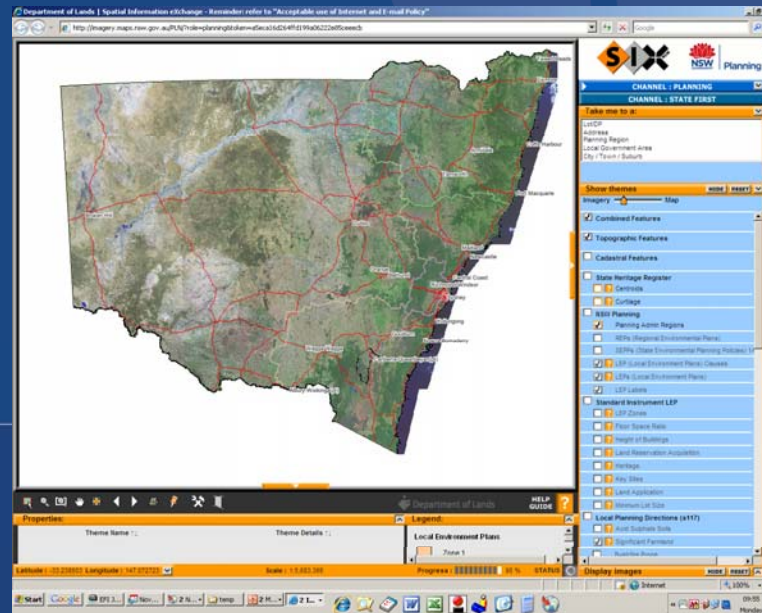


# Participation welcomed

- We are keen to hear from
  - Local Government
  - Industry representatives
  - State Agencies
  - Community representatives
  - Vendors
  - Research institutions
  - Other jurisdictions

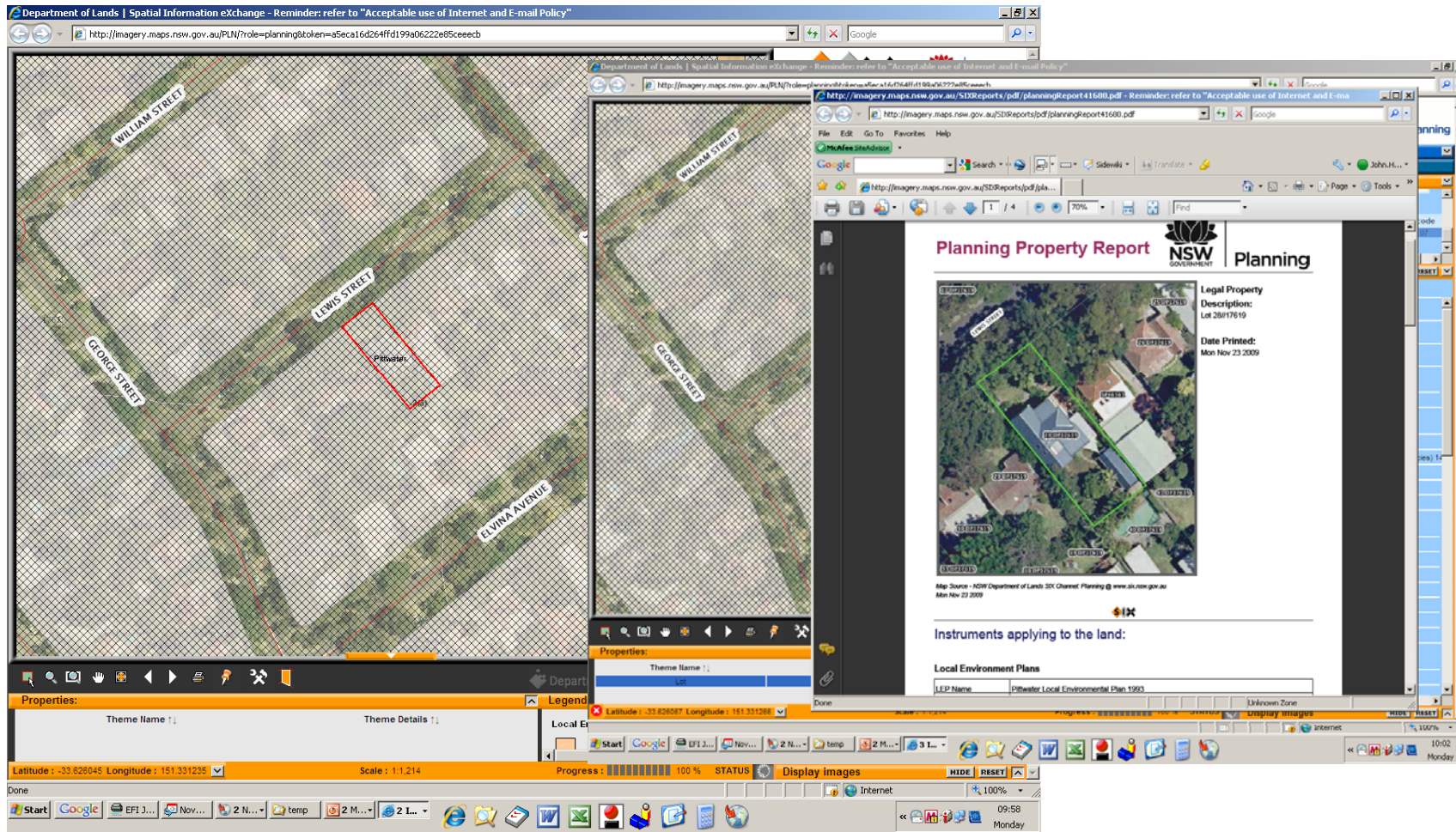


# “Planning Channel” on Spatial Information Exchange





# SiX Planning Channel



The screenshot displays the SiX Planning Channel web application. The main interface features a large map on the left showing a street grid with labels for William Street, Lewis Street, George Street, and Elvina Avenue. A red rectangular area on the map is labeled 'Pflaster'. To the right of the map is a smaller, zoomed-in view of the same area. Below the map is a 'Properties' panel with a 'Theme Name' field. At the bottom of the map area, the coordinates 'Latitude : -33.626045 Longitude : 151.331235' and 'Scale : 1:1,214' are visible. On the right side, a 'Planning Property Report' is displayed, featuring the NSW Government logo and the title 'Planning Property Report'. The report includes an aerial map of the property, a 'Legal Property' section with 'Description: Lot 26917619' and 'Date Printed: Mon Nov 23 2009', and sections for 'Instruments applying to the land:' and 'Local Environment Plans' with 'LEP Name: Pflaster Local Environmental Plan 1993'. The browser window shows the URL 'http://imagery.maps.nsw.gov.au/PLN/role=planning&token=a5eca16d264fffd199a06222e85fceeceb' and the title 'Department of Lands | Spatial Information eXchange - Reminder: refer to "Acceptable use of Internet and E-mail Policy"'. The Windows taskbar at the bottom shows the Start button, several open applications, and the system clock displaying '09:58 Monday'.

## Six Planning Channel - Content

- LPMA cadastre
- LPMA topographic data
- Local Environmental Plans (LEP)
- State Environmental Planning Policies (SEPP)
- Regional Environmental Plans (REP)
- State Heritage Register
- Local Planning Directions (Section 117 of the EP&A Act) data e.g. Sulphate Soils, significant farmlands, bushfire prone land.

## Why a Six Planning Channel?

- **Aligning with broader state and federal objectives**
- **Meeting internal business needs**
- **Testing ground for delivering a range of planning services online**
- **Focus our efforts on reliable high quality data**

## Issues with delivering planning data online.

- Quality of planning data
- Quality of external data
- The 'single point of truth'
- Related issues of 'customer' satisfaction and legal liability
- Access and availability (Restrictions?)

## Proposed strategy for minimising or mitigating the risks is:

- To implement a quality management system
- To have this certified against an internationally recognised benchmark namely ISO 9001:2008
- Legal Disclaimers etc.
- Effective use of metadata



Planning

Thank you

John Hudson  
[John.Hudson@planning.nsw.gov.au](mailto:John.Hudson@planning.nsw.gov.au)