

RECYCLING ELECTRONIC SCRAP PAYS

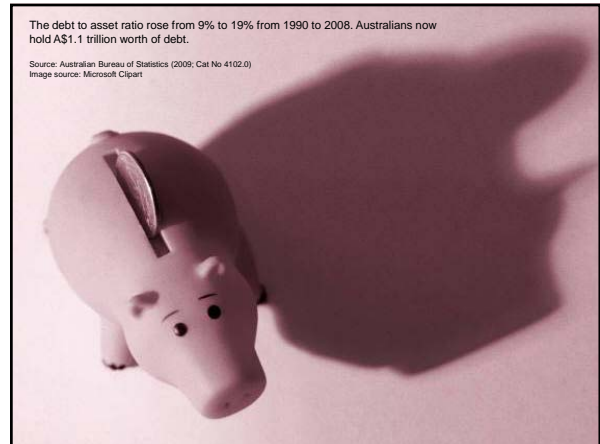
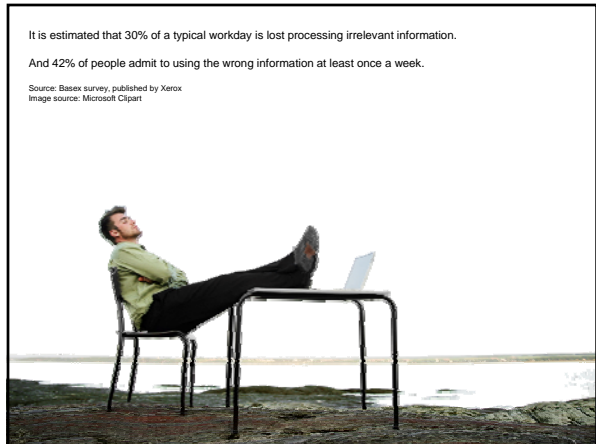
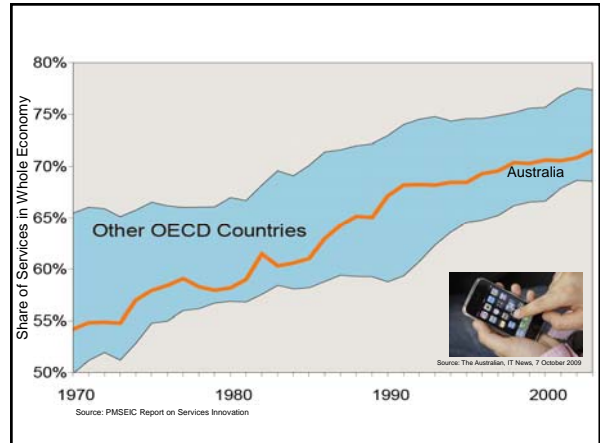
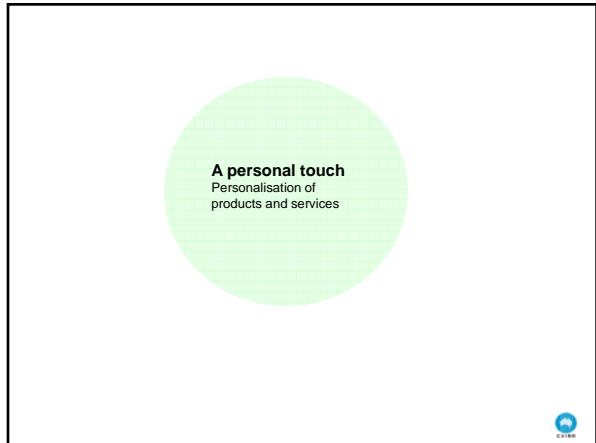
1 TONNE OF MOBILE TELEPHONES YIELDS:	1 TONNE OF ORE YIELDS:
50-150 kg copper	3.7 kg copper
500-700 g silver	4.2 g silver
150-400 g gold	0.2 g gold

Expenditure on offshore petroleum exploration has been rising at 20% per year for 30 years

And more quickly in recent years jumping from A\$857 million in 2005 to \$2.89 billion in 2008.

Data Source: Australian Bureau of statistics 2009 (Cat No. 5412.0)
Image source: Microsoft clipart







On the move
Urbanising and increased mobility

China needs to build 3 cities larger than Sydney every year until 2030 to accommodate rural to urban migration.

Shenzhen 1982

Shenzhen 2007

Image source: The Chinese UPLA urban planning network, <http://www.upla.cn>
Statistic derived from analysis of the United Nations, World Urbanization Prospects, The 2007 Revision Population Database

Jet aircraft passengers worldwide travelled 4,621 billion kilometres in 2008 and this is forecast to rise to 12,090 billion by 2028.

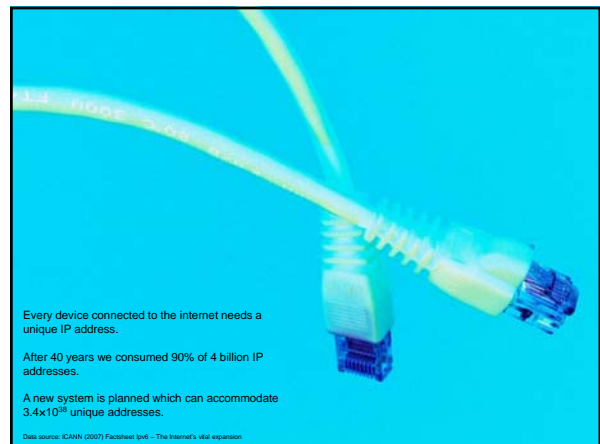
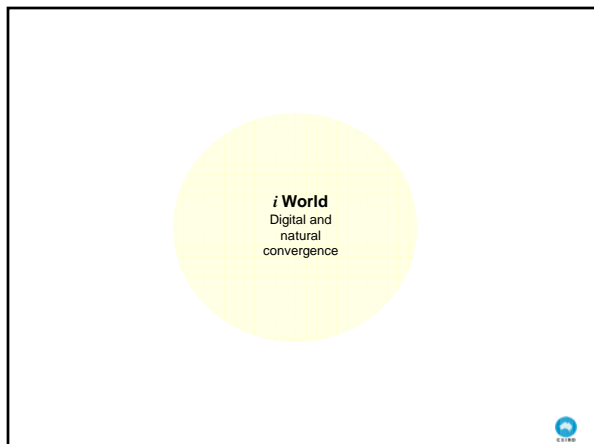
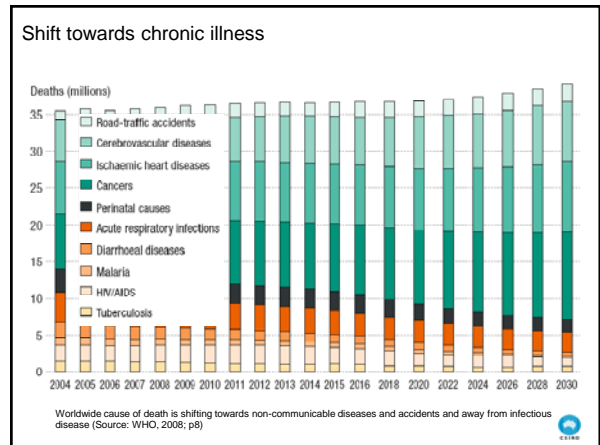
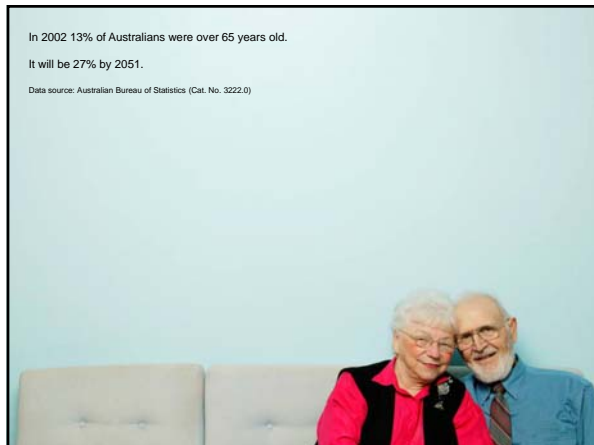
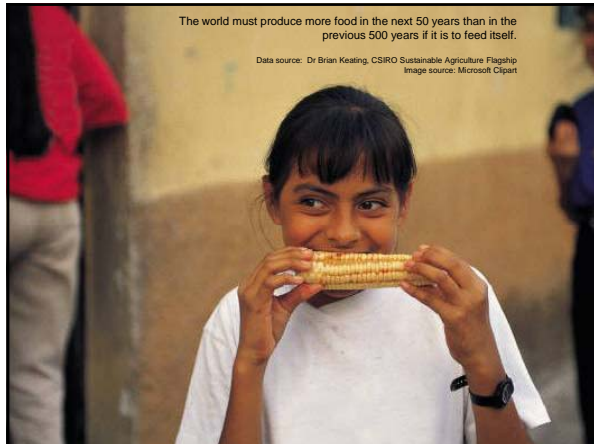
This represents growth of 5% per year compared to global GDP of 3% per year.

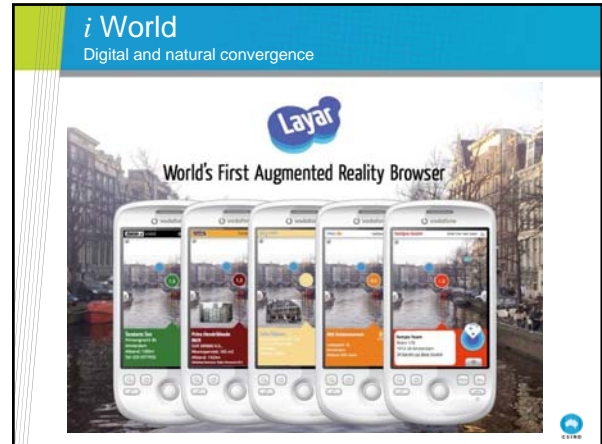
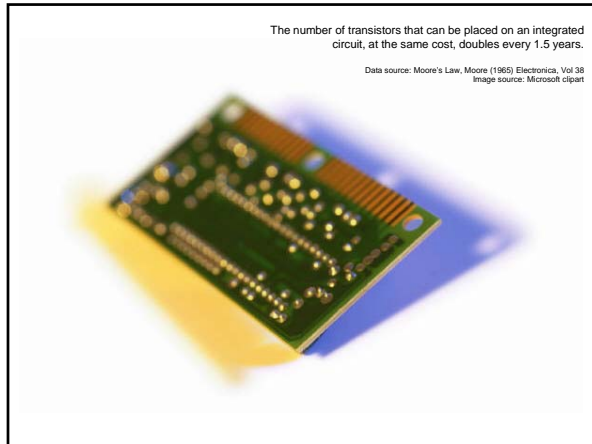
Data source: Boeing Current Market Outlook 2009-2028
Image source: Stefan Hagenwieser

Divergent demographics
Older, hungrier and more demanding

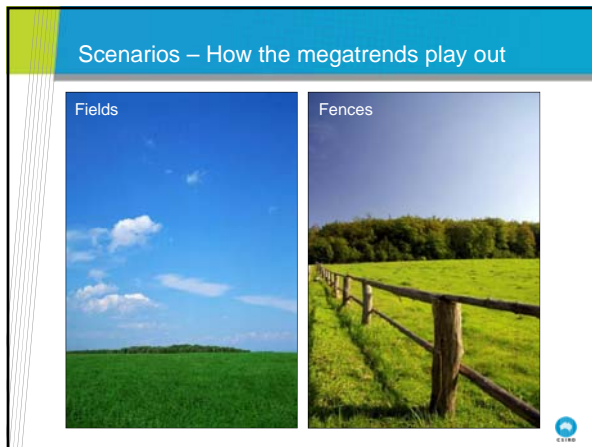
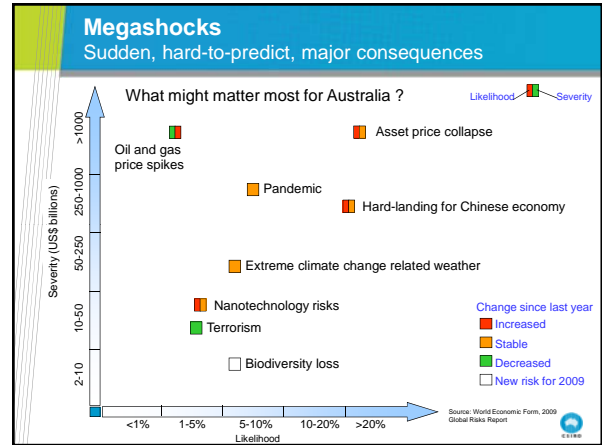
In 2005 5% of Indian citizens were middle class. It is forecast to be 20% by the year 2015 and 40% by the year 2025.

Data source: The Economist, 12 Feb 2009
Image source: Microsoft Clipart





Megashocks and Scenarios



Thank you

Contact Us
Phone: 1300 363 400 or +61 3 9545 2176
Email: enquiries@csiro.au Web: www.csiro.au