



Sea Level Rise and Climate Change 

GIS IN THE COASTAL ENVIRONMENT

Workshop and Forum


**Gosford City Council
Sea Level Rise Planning**

Tim Macdonald
Senior Environment Planning Officer


GIS in the Coastal Environment workshop 


Presentation Outline

- Resolution of Council
- Informing the Community
- Implementation


Resolution of Council 


*At its meeting of 27 January 2009, Council considered and approved a report that recommended adopting, **for purposes of future planning**, a sea level rise planning level of 91cm by the year 2100.*

The basis for 0.91m 



Practical Consideration of Climate Change

HCCREMS Position Paper 



Adoption of a Regionally Consistent Planning Level in Response to Climate Change Induced Sea Level Rise





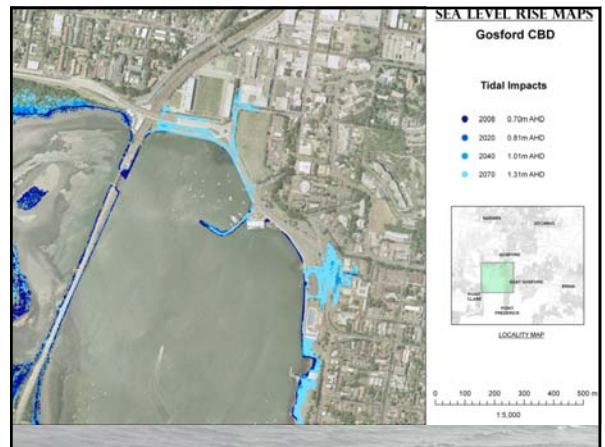
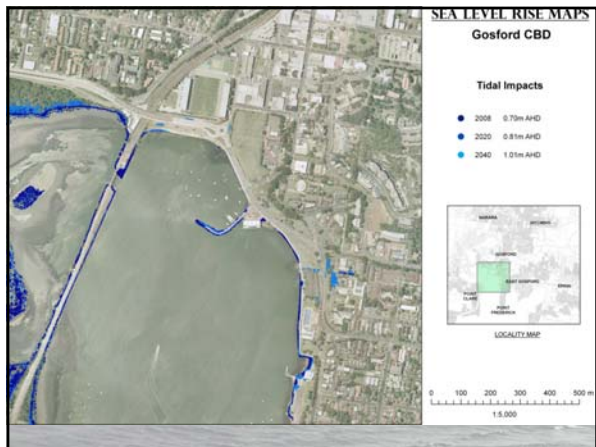
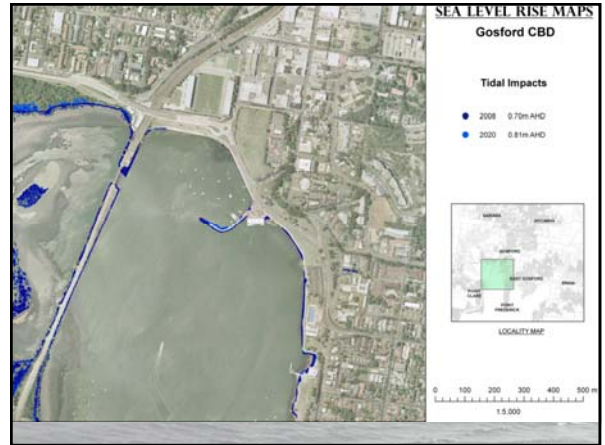
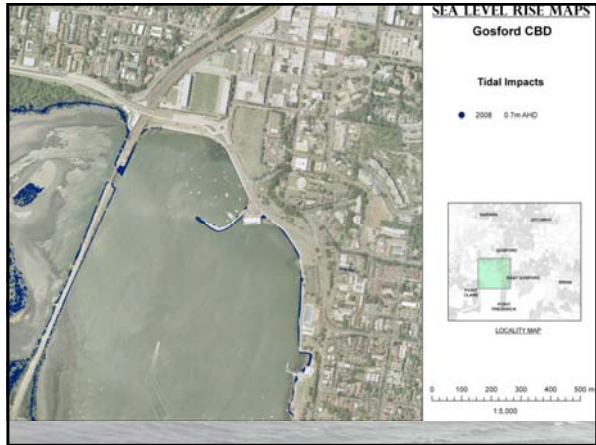
Informing the Community 

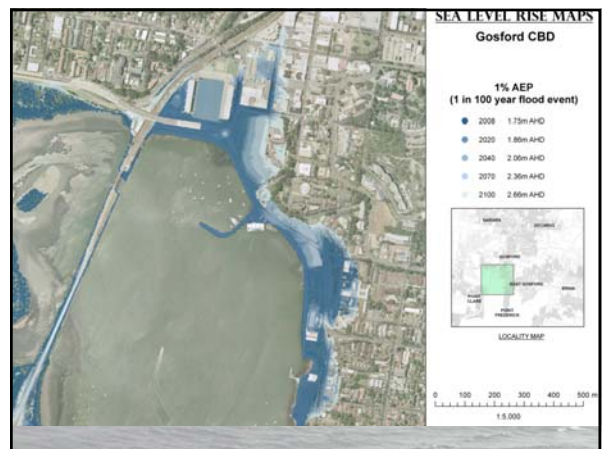
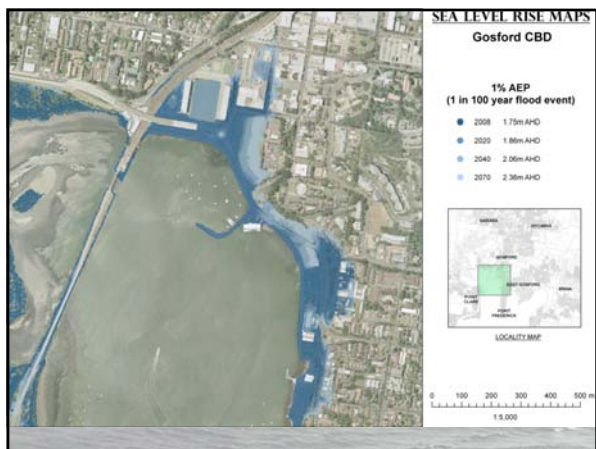
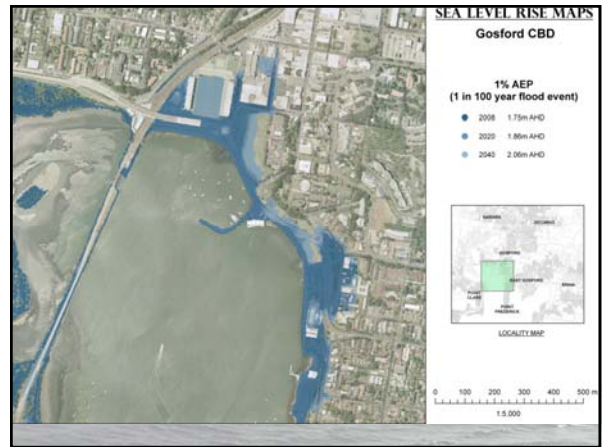
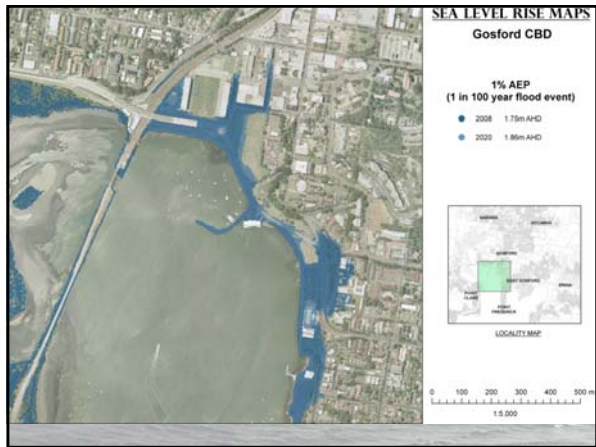
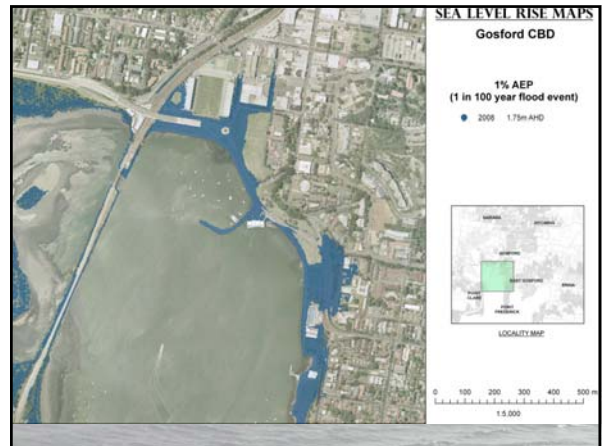
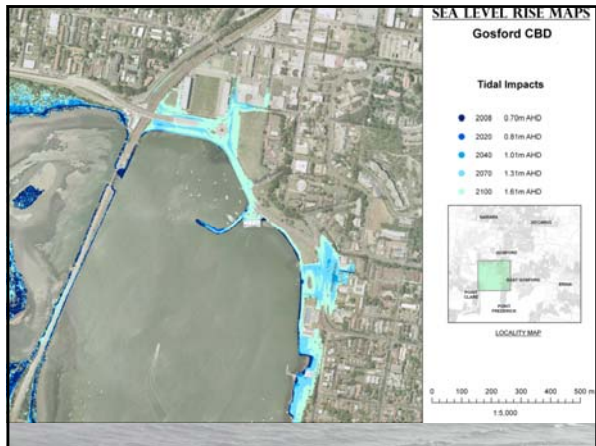
Exhibit proposal to adopt planning level

Fact Sheet 


Web Mapping & Information 

Hard Copy Mapping 





Fact Sheet



Details of the Council Resolution

What is SLR

Why 0.91m

Why Adopt a Level

What are the Hazards

Will SLR make Flooding Worse


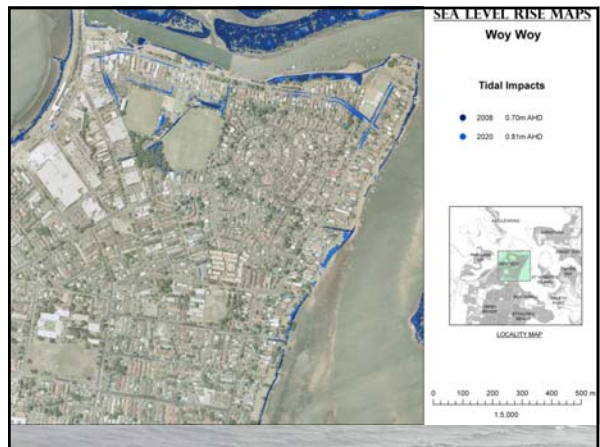
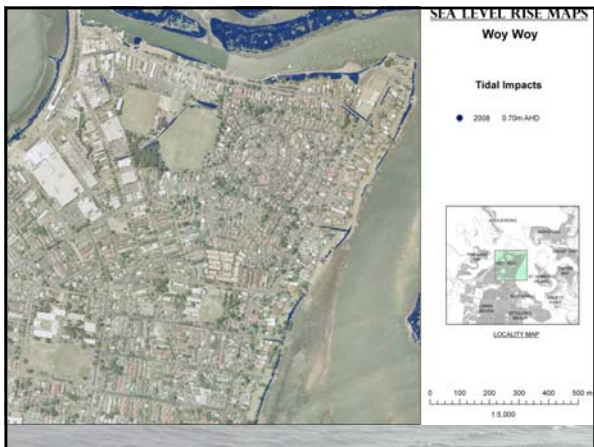
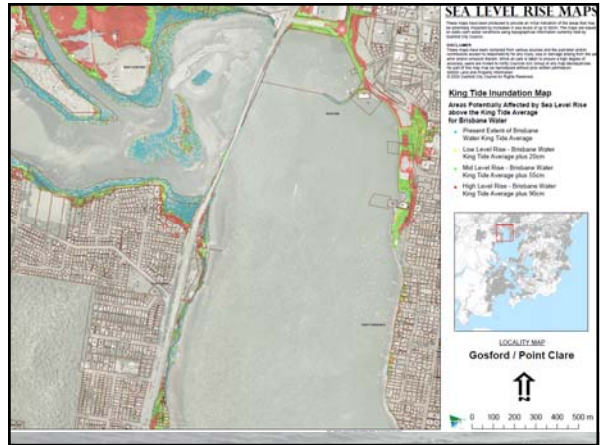
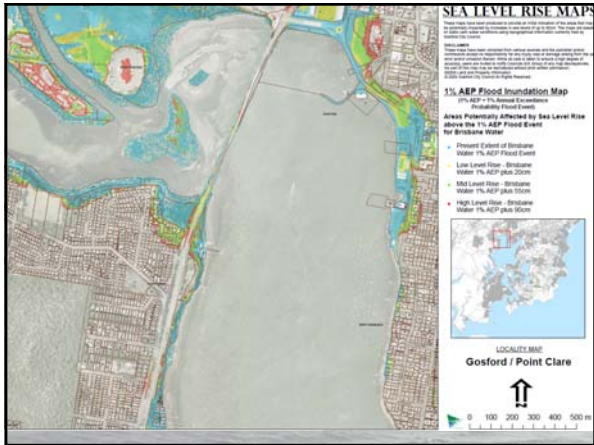
Other Climate Change Impacts

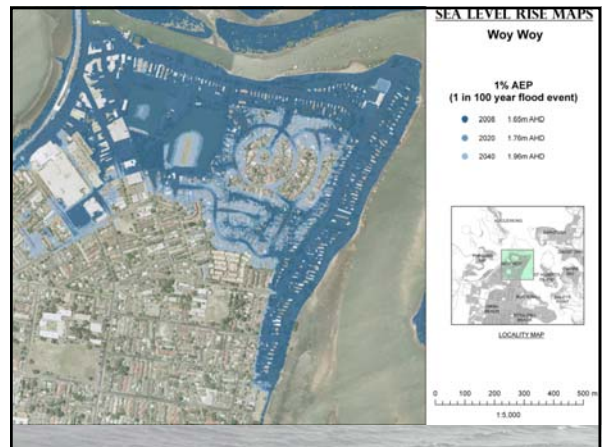
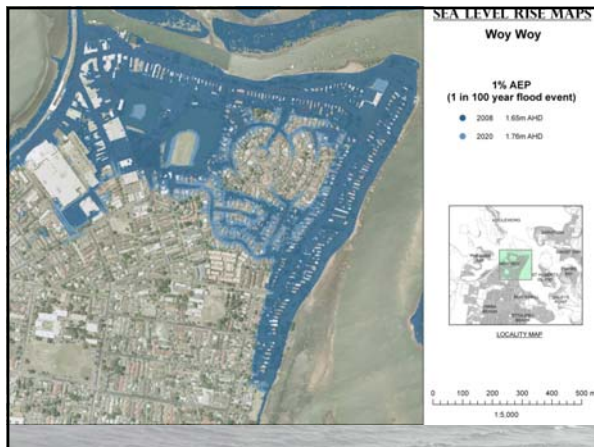
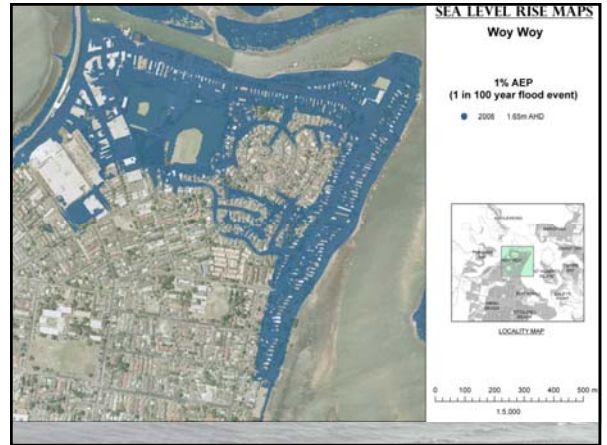
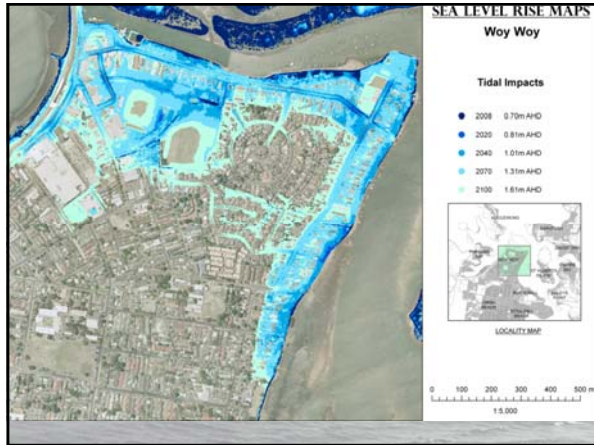
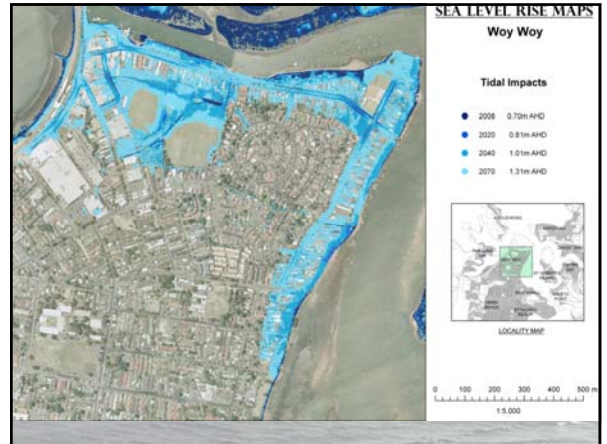
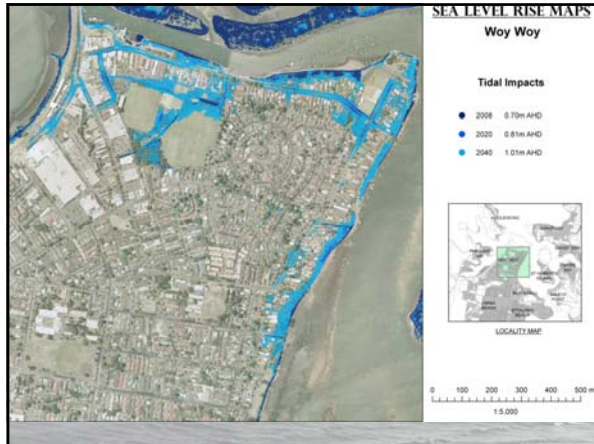
What if the Scientists have got it wrong

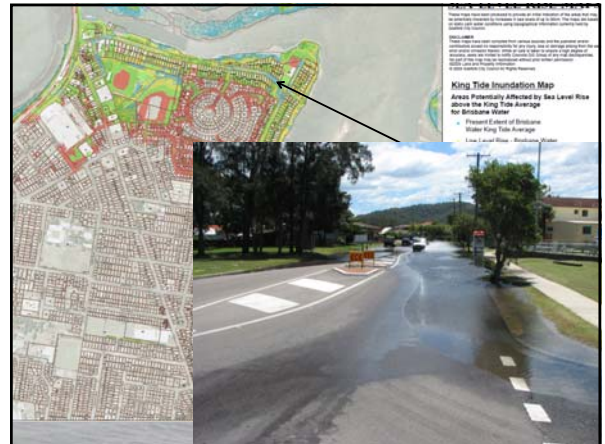
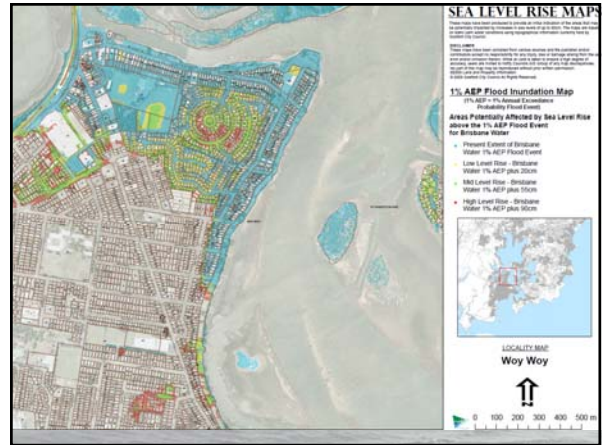
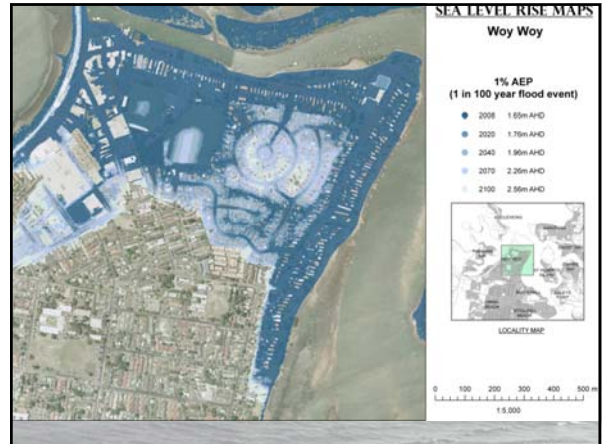
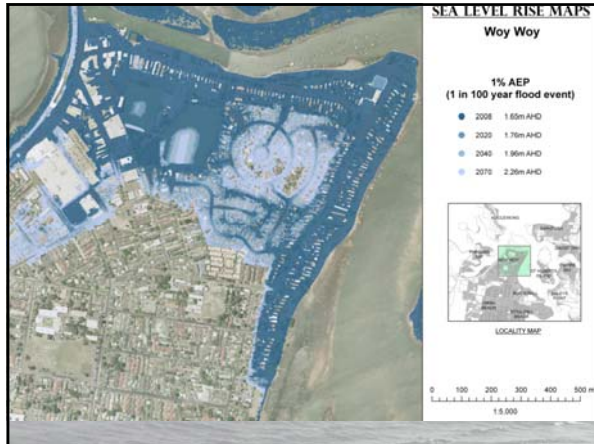
What will Council do

Community Involvement

Immediate effects

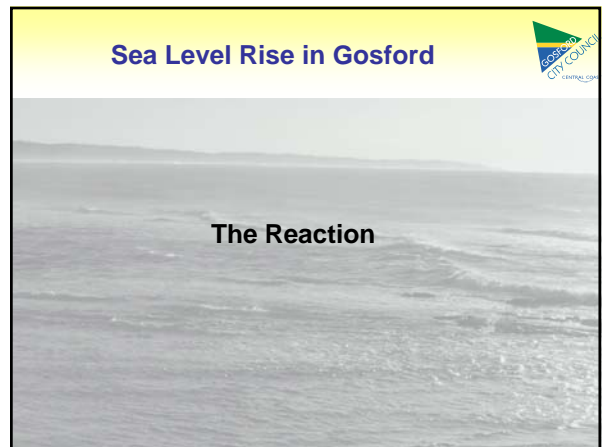
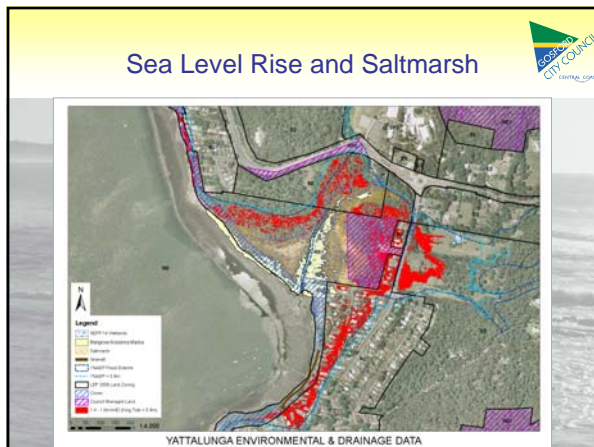
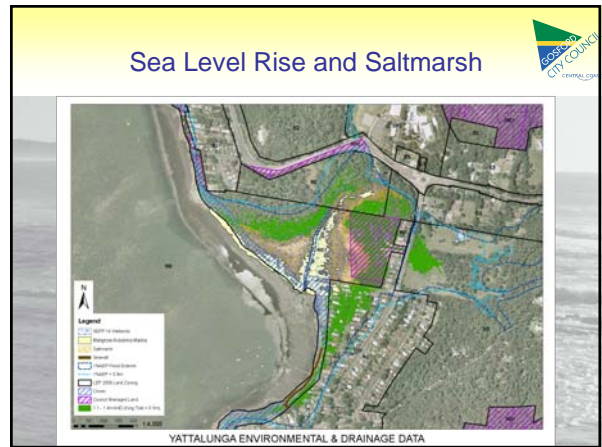
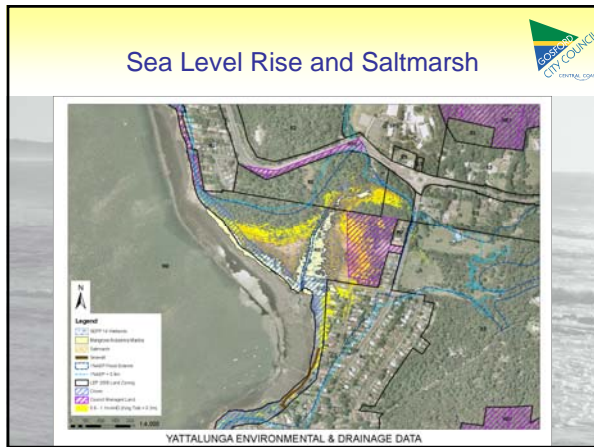
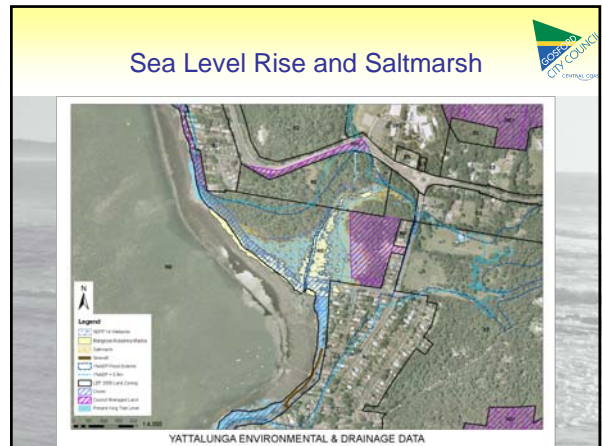


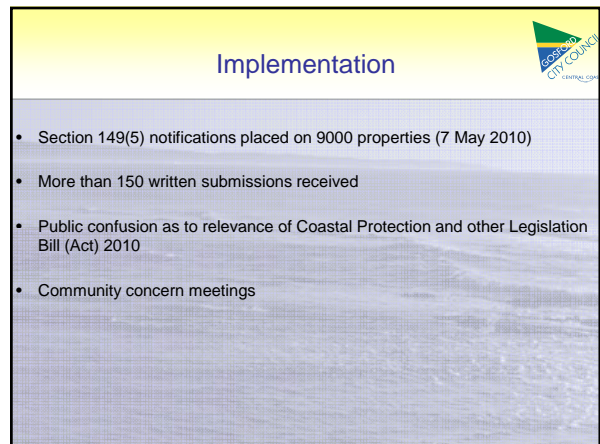
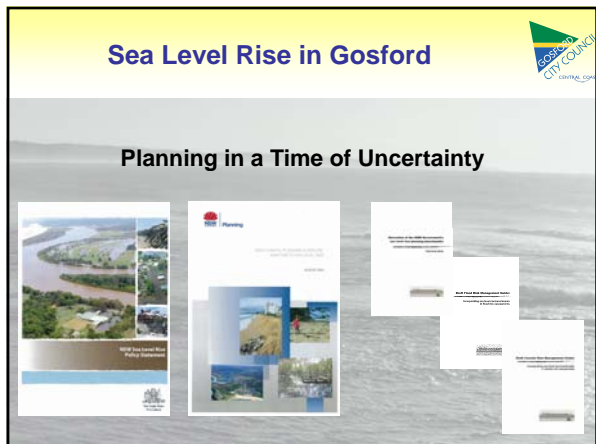
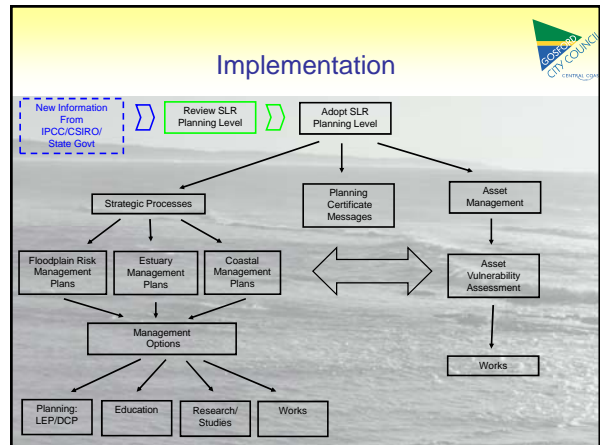
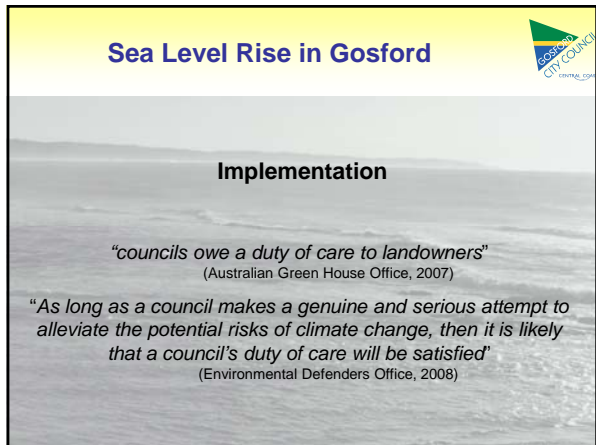


Website Information

Department of Planning
High resolution NSW Central assessments impacts
Sea Level Rise Policy Statement
Sea Level Rise Fact Sheet

YATTALUNGA ENVIRONMENTAL & DRAINAGE DATA







Sea Level Rise in Gosford

Further information provided to community:

- Why did Council put SLR information on Section 149 Certificate?
- Why did Council consider it had a Duty of Care?
- What does Section 149(5) of the Environment & Planning Act 1979 actually say?
- What consultation did Council undertake prior to encoding?
- Does Council consult prior to placing a new message on a Planning Certificate?
- What does the s.149(5) message say?
- Will the encoding affect insurance premiums for properties encoded?
- Will the encoding affect the value of properties encoded?

Questions

What will tomorrow bring?

Tim Macdonald
 Snr Environment Planning Officer
 Integrated Planning - Gosford City Council
 Phone: (02) 4304 7658
 E-mail: tim.macdonald@gosford.nsw.gov.au