




## A National Framework for Hydrographic Data Management

Doug White  
 Deputy Director Data Management  
 Australian Hydrographic Office  
 9 November 2010



## Australian Hydrographic Service

- **National Hydrographic Data Custodian**
  - Management of Hydrographic and Oceanographic Data
  - Tidal and Geodetic Data and Products
  - Nautical Information and Publications
- **Support Development of National Framework**

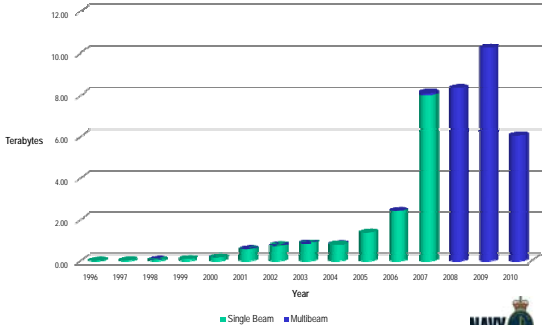
## Traditional Data Sources

- **Maritime and Research Silos**
  - RAN Collection
  - Maritime and Port Authorities
  - Resources and Exploration
  - Earth Science Research





## How much data is there?

RAN Yearly Data Collection





Year	Single Beam (Terabytes)	Multibeam (Terabytes)
1996	0.1	0.0
1997	0.1	0.0
1998	0.1	0.0
1999	0.1	0.0
2000	0.1	0.0
2001	0.1	0.0
2002	0.1	0.0
2003	0.1	0.0
2004	0.1	0.0
2005	0.1	0.0
2006	0.1	0.1
2007	0.1	0.2
2008	0.1	0.3
2009	0.1	0.4
2010	0.1	0.3

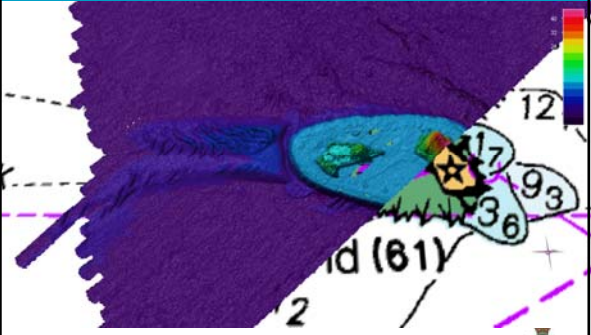



## What type of data is available?

- 20,000+ manuscript records
- **Digital Bathymetry**
  - Single Beam
  - Multi-beam
  - LADS
- Side Scan Sonar
- Imagery

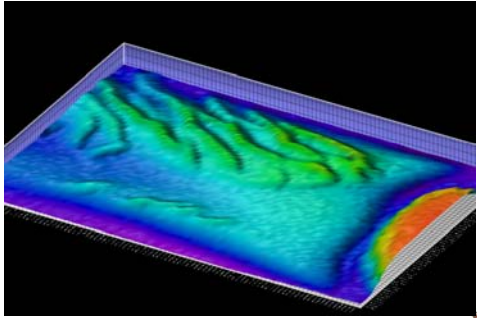



## LADS survey data overlaying chart

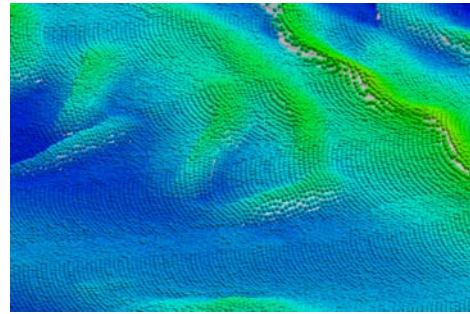
### Full Density Source Data

Laser Airborne Depth Sounder

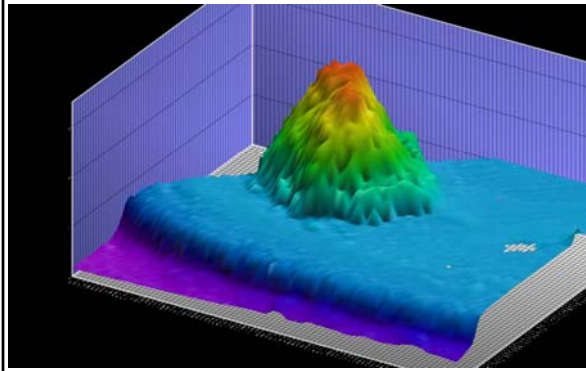


### Individual Soundings

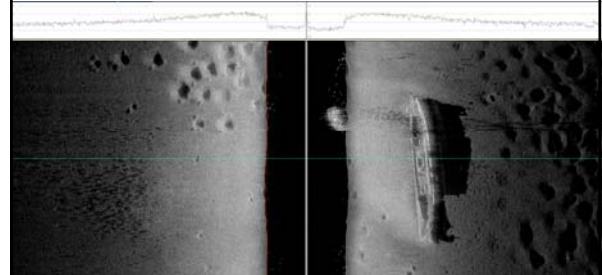
Sand Waves Torres Strait



### Surface Model



### Side Scan Sonar



### LADS Air Mosaic 0.5 metre resolution



### Using Coastal Environment Data

- Navigational Safety
- National Elevation Data Framework
- Engineering and Exploration
- Tsunami and Climate Change Modelling
- Biodiversity/Habitat and Aquaculture Research
- Seabed Mapping
- Geomorphology



## Meteorology and Oceanography Data

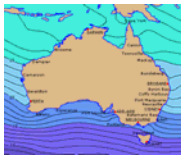
Online Data Access

- Coastal Sea Surface Temperatures

Geographic Information  
Location=Batemans Bay State=NSW Latitude=35 43S Longitude=150 10E

Monthly Averages  
Jan=21.5 Feb=21.9 Mar=21.6 Apr=21.2 May=19.2 Jun=17.7  
Jul=16.2 Aug=15.4 Sep=16.1 Oct=17.2 Nov=17.8 Dec=19.2

Summary Statistics  
Max=21.9 Min=15.4 Avg=18.75 Std Dev=2.36




- Coastal Sea Surface Salinity

Geographic Information  
Location=Batemans Bay State=NSW Latitude=35 43S Longitude=150 10E

Monthly Averages  
Jan=35.7 Feb=35.7 Mar=35.7 Apr=35.7 May=35.7 Jun=35.7  
Jul=35.6 Aug=35.6 Sep=35.6 Oct=35.6 Nov=35.6 Dec=35.6

Summary Statistics  
Max=35.7 Min=35.6 Avg=35.65 Std Dev=0.05



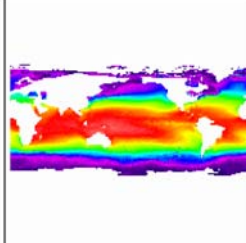
NAVY

## Meteorology and Oceanography Data

<http://www.metoc.gov.au/ArcGIS/rest/services>

ArcGIS Services Directory  
Home > climatology > ICOADS [MapServer]

Export Map Image (climatology/ICOADS)




Width: 400  
Height: 400  
Extent:  
XMin: -7.1522680598091  
YMin: -183.023909205549  
XMax: 365.31744190236  
YMax: 189.445800756621  
Spatial Reference: 4326  
Scale: 391338320.999508

NAVY

## BlueNet MEST

<http://www.metoc.gov.au/geonetwork/>

- XBT Temp Profile
- Secchi Disc Data
- Seabed Samples
- Bioluminescence



NAVY

## Data Management Software Tools

- Hydrographic Transfer Format (HTF)  
Distribution format for sounding data
- HTFBuilder  
Create and manage HTF data files
- MarineQC  
Quality control tool for marine datasets
- MarineXML  
Marine environmental data format

NAVY

## External Data Sources

- 60% of all survey data is from external agencies

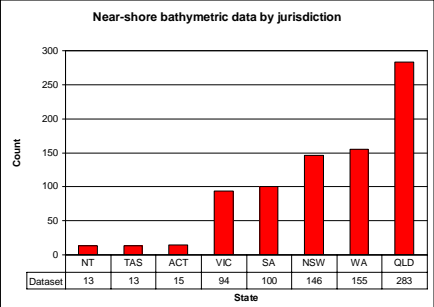
Data Origin	All Datasets (Oct 10)		Near-shore Bathymetry (+3 Nm coast)		
	Count	Percent	Count	Percent	Percent of All
Internal	4892	41	423	34	9
External	7154	59	817	66	11
Total	12046	100	1243	100	10

- Invaluable to the AHS
- Limited National exposure

NAVY

## What do we know exists?

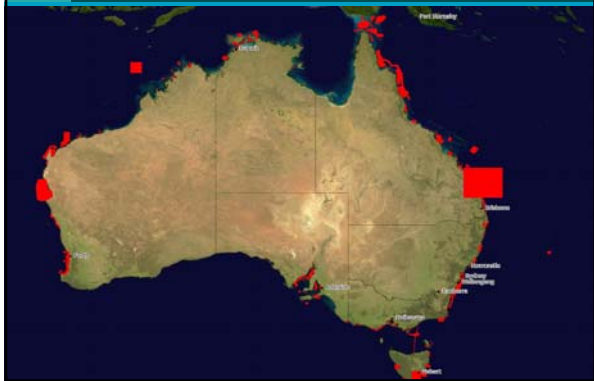
Near-shore bathymetric data by jurisdiction



State	Count
NT	13
TAS	13
ACT	15
VIC	94
SA	100
NSW	146
WA	155
QLD	283

NAVY

## Where is the data located?



## Future Requirement

- Jurisdictional Silos
- New “collectors” of hydrographic data
  - Environmental, Planning and Climate Change Agencies
- Coastal super datasets merge LiDAR and LADS



## Engagement

- Requirement for national approach
- Establish a national working group
- Strategies for open data access and exchange
- Engage the “new collectors”



## Roadmap Options

- Existing frameworks
  - OPSAG
  - ICSM National Collaborative Framework
- ICSM Working Group (Hydrographer Sponsor)
- Reach agreement
- Pursue funding
- Acquire resources



## Recommendations

- Identify all stakeholders followed by national audit
- Establish a national marine SDI
- Review licensing policy
- Ratify a marine metadata profile
- Define a federated custodianship model
- Define or use existing portals for data access



## Collective Benefits

- Safety of navigation
- Accurate data for informed decision making
- Enhanced environmental management
- Minimise data duplication and collection
- Enable best practice data management & use of technology
- Enhance the ASDI and NEDF



## Web Links and References

- **Data Management**

- [hydro.data@defence.gov.au](mailto:hydro.data@defence.gov.au)

- **Data Licensing**

- [hydro.licensing@defence.gov.au](mailto:hydro.licensing@defence.gov.au)

- **Web Links**

- HTF - <http://www.hydro.gov.au/tools/htf/htf.htm>
- MarineQC - <http://www.metoc.gov.au/products/marineqc.php>
- MarineXML - <http://www.metoc.gov.au/products/marinexml.php>

