



# The Old Bar Experience

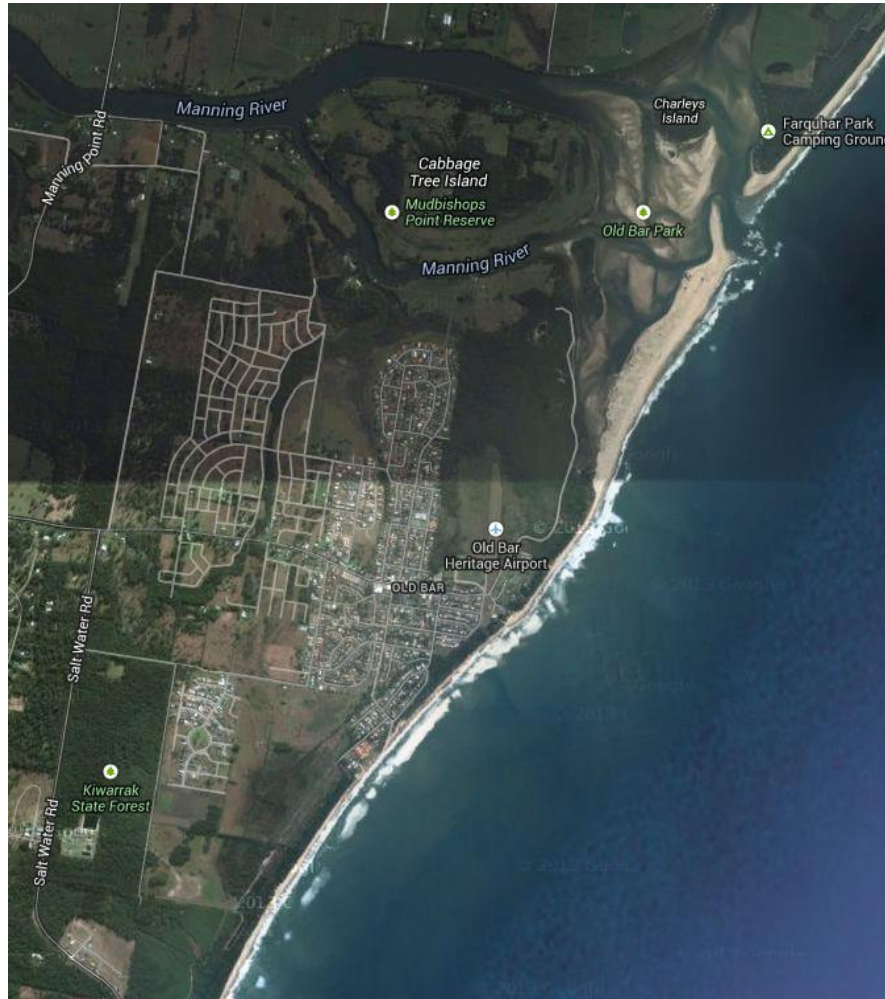
- dealing with interest groups, the media, government agencies, Planned Retreat and coastal solutions within a politically charged environment

Richard Pamplin  
Senior Leader Strategic Planning

12 November 2013



# Old Bar



# Old Bar – public infrastructure



# Old Bar – private infrastructure



# Old Bar – private infrastructure



# Old Bar – private infrastructure



# Interest Group – Old Bar Beach Sand Replenishment Group



- Groynes
- Reefs
- Passionate or misguided?
- Representative of community?
- Placation vs. saying “no”?



# The Media



Media releases – key tool for keeping wider community informed  
Don't hide – be available for comment and mindful of deadlines  
The media can be your friend



# Government agencies

6 months ago:

DPI – Crown Lands

OEH



Council

Now:

OEH



Council



Catalyst for change – Refusal by NSW Coastal Panel of Seawall DA

# Planned Retreat – policy stance

At its Ordinary Meeting on the 16 February 2011, Council resolved to adopt a policy stance of planned retreat for the management of the entire coastline.

This reflected Council's current and likely future financial position.



# What is Planned Retreat?

Planned retreat allows development to remain until the coastal hazard risk becomes unacceptable.

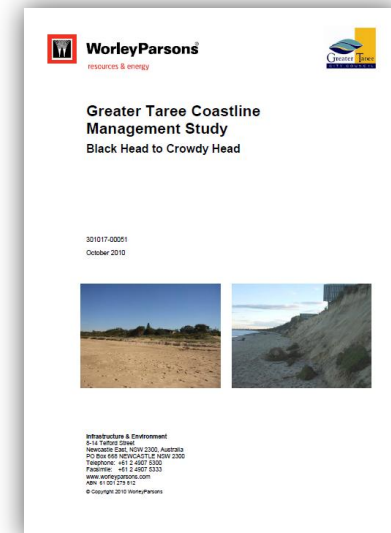
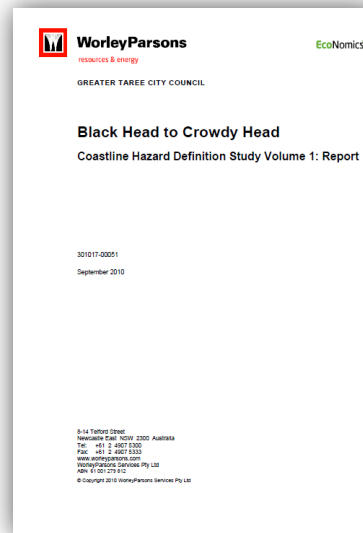
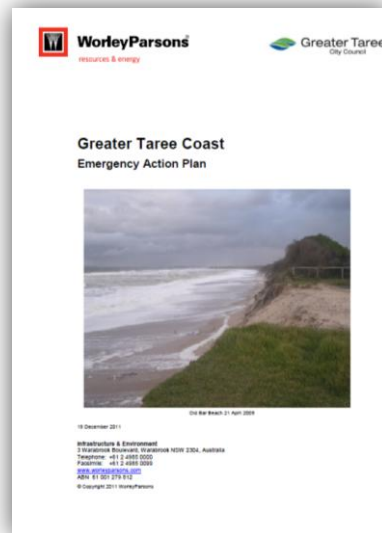
Planned retreat involves the removal or relocation of development and/or infrastructure when the erosion escarpment reaches a pre-determined trigger distance, or when legal road access and/or services are no longer available to service the property.



# Documentation

A number of documents have been prepared, which include:

- *Coastal Hazard Definition Study Volumes 1-2 2010*
- *Coastline Management Study 2010*
- *Greater Taree Coast Emergency Action Sub-Plan 2011*
- *Draft Coastal Zone Management Plan 2013*



# Coastal Solutions

- Preliminary coastal protection structure design – Old Bar
- Detailed design?
- Funding?
- On-going maintenance?



# Politics

- State members – Robyn Parker MP, Steve Bromhead MP
- Attacks on Mayor Paul Hogan and senior staff
- Representing community views?
- All of government approach? Where are the Feds?





**Any questions?**