



Tapping into local knowledge: better community engagement in coastal planning

12 November 2013

Presented by Tim Macdonald
Senior Environment Planning Officer, Integrated Planning



An aerial photograph of a coastal region, likely in Queensland, Australia, showing a complex network of waterways and land parcels. The water bodies are highlighted in a dark teal color, while the land is shown in shades of green and brown. The map illustrates the impact of sea level rise on various coastal features.

Creeks

Sea level will affect tidal inundation
Flood levels affected in lower reaches

Brisbane Water

Tidal inundation + Flooding
4000+ parcels currently affected by 1%
5000+ SLR in 2050

Hawkesbury River

Sea level will affect tidal inundation
Flood levels affected in lower reaches

Lagoons

Inundation & flood risk to
increase

Implications for entrance
management

Open Beaches

191 parcels (108 buildings) at immediate risk from erosion
313 parcels (256 buildings) from inundation

Coastal planning for the Gosford LGA

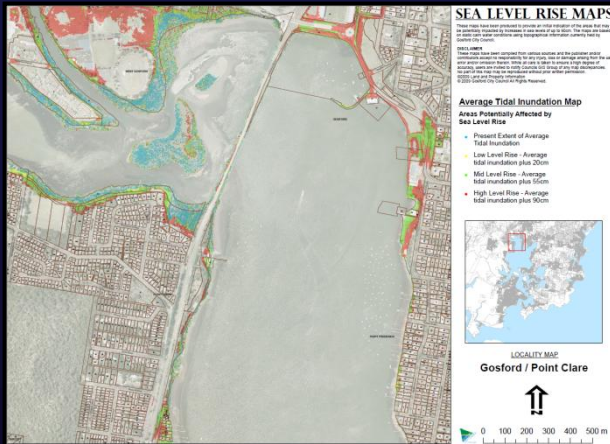
- Coastal Zone Management Planning
 - Open Coast & Broken Bay Beaches
 - Brisbane Water
 - Coastal Lagoons
 - Lower Hawkesbury
- Floodplain Risk Management Planning
 - Brisbane Water Foreshore Inundation
 - Coastal Lagoons
 - Various overland flow and sub catchment studies
- Climate Adaptation Planning
 - decision support tools, risk assessments, spatial mapping
 - corporate review



Informing the community in 2009

Exhibition of Council proposal to adopt a planning level

Hard Copy Mapping



Fact Sheet

Sea Level Rise Fact Sheet

At its meeting of 27 January 2009, Council considered and approved a report that recommends adopting, for purposes of future planning, a sea level rise planning level of 90cm by the year 2100.

The report and recommendations are now open to public comment and submissions are invited before Council makes its final consideration. The exhibition period closes on 30/03/2009 12:00.

What is the report concerned with?

- Council asked the NSW Department of Environment and Climate Change to produce a report on the impact of sea level rise for the year 2100 of 90cm with an assumed three metres from present day levels as the basis for Council staff to present with the assessment, policy development and planning and development decisions.
- Community consultation activities to undertake the period of a least one month with regard to a above and a further report to the community from the community consultation be presented to Council.
- Community consultation to engage community groups in order to help of the report and further action to Council's Environmental Committee and City of Climate Protection Development Task Force areas with engagement of future Council reference group associated with the development of Gosford Draft LDP 2009.

Web Mapping & Information

Online Notices | Gosford Challenge | Contact Us | Jobs | Payments | Council Meetings

you are here: Home -> mapping -> sea level rise mapping

Home

Aquatics, Leisure & Lifestyle

Civic Infrastructure Strategy

Community Services

Council

Customer Services

Electronic Drop Box

Environment

Stems on Exhibition

Libraries

Mapping

News and Events

Open Space and Leisure

Tenders and EOI

Theatre and Gallery

Water Information Centre

Sea Level Rise Mapping

Gosford City Council online mapping - mapping of sea level rise

***** IMPORTANT INFORMATION REGARDING SEA LEVEL RISE MAPPING *****

These maps have been produced to provide an **initial indication** of the areas that **may be potentially** impacted by increases in sea levels of up to 90cm.

The information produced in this map service is in response to the Council resolution dated 27 January 2009 and the NSW Department of Environment and Climate Change (DECC) Floodplain Risk Management Guidelines entitled, "Practical Considerations of Climate Change" (released on 29th October 2007). This guideline used the information provided in the following 2 reports to develop the case for advising that Councils should consider a Sea Level Rise planning level for the year 2100 of up to 9.0m within their flood planning activities.

- The Fourth Assessment Report of the IPCC, February 2007, known as Climate Change 2007.
- The Climate Change in Australia: Technical Report 2007, by the CSIRO and the Bureau of Meteorology.

The maps are based on static calm water conditions using topographical information currently held by Gosford City Council.

The maps have been produced to share with the community information held by Council and therefore ensure Council is acting in a transparent manner. The maps are designed to inform the community of potentially vulnerable areas within the Gosford Local Government Area should sea levels rise to the upper levels as predicted in the documentation released by the NSW State Government. The actual extent of impacts may be greater or lesser than that shown but the maps represent the best information the Council holds at the time.

Average Tidal Inundation Maps Explanation

The average tide maps are maps assuming a tide reaching approximately 0.7m AHD (Australian Height Datum). Although there is technically no such thing as an average tide, this was produced to provide a general level for information purposes.

King Tide Inundation Maps Explanation

The king tide is highest tide which occurs at the time of the new moon or full moon in the Summer or Winter months in Australia.

1% AEP Flood Inundation Maps Explanation

AEP is the measure of the likelihood (expressed as a probability) of a flood reaching or exceeding a particular magnitude. A 1% (AEP) flood has a 1% (or 1 in 100) chance of occurring or being exceeded at a location in any one year.

Ocean Storm Tide Inundation Maps Explanation

Ocean storm surge is the increase in coastal water levels caused by the combined effect of persistent wind and a low pressure weather system consistent with storm conditions.

Background information

High risk NSW C assess impacts

climatechange

technical report



The reaction

Peninsula News

Community Access

Edition 221 Phone 4344 1844 Fax 4344 1944 August 10, 2009

Property market unaffected by sea level report - agent predicts

Real estate prices are unlikely to be affected by Gosford Council's release of its 90-year projection of sea level rise, according to a local real estate agent.

Gosford Council will release maps on Wednesday showing a 91cm sea level rise by the end of the century - in line with CSIRO figures and a policy adopted by the Department of Environment and Climate Change.

The maps are expected to show that a large area of Woy Woy would be affected by such a sea level rise.

However, real estate agent Mr Greg McMullen, who is vice-president of The Bays Community Group, said "the climate change issue" did not seem to have any impact on waterfront property prices as yet.

"I think potential buyers and property owners are thinking significant rises in sea levels are a long way off to worry about.

"Other impacts such as the global financial crisis seem to be affecting sales more than anything at the moment."

Gosford mayor Cr Chris Holstein said it was important for the community not to panic when discussing the issues and affects associated with climate change and sea level rises.

"We want the community to be aware of the current information council has on hand from the experts into the future of the area," Cr Holstein said.

In releasing the maps, Gosford Council will not be proposing specific "management options".

Instead, it will seek comments and suggestions from the public before developing adaptive strategies.

Council's manager of integrated planning Mr Eddie Love said the public exhibition was the first stage for council to prepare for the possible effects of climate change including sea level rises.

"Council felt it was important to include the public with this issue right from the start which is why we have decided to hold the exhibition," Mr Love said.

"Community consultation and submissions will be sought throughout the exhibition.

"The exhibition also allows us to share information to the community and let them know where we are at in terms of the climate change issue.

"By sharing this information and identifying areas that are potentially vulnerable, we are able to work together with the community to respond and adapt to the effects of sea level rise."

Mr Love said low lying and waterfront properties found on the Peninsula at Woy Woy and Empire Bay as well as Saratoga and Davistown would most likely be affected by changes in sea level over the coming century.

"The information we have obtained indicates low-lying and areas already prone to flooding may be affected," Mr Love said.

Clara Graham, 7 Aug 2009 Interviewee: Eddie Love, Gosford Council Cr Chris Holstein, Gosford Council Greg McMullen, Greg McMullen Real Estate

See page 9 for more details



Low-lying areas of the Peninsula - based on Gosford Council's Digital Elevation Model map published in the Department of Planning's "High resolution terrain mapping" final project report May 2008.

CENTRAL COAST NEWS

www.expressandvoice.com.au

Plan to stay high and dry

TERRY COLLINS

GOSFORD Council is determined not to get its feet wet when faced with predictions sea levels will rise by almost a metre toward the end of the century.

Integrated planning manager Eddie Love said an exhibition of the council's future planning for sea level rise would be on public view at Erina, Kinlumber and Woy Woy libraries until September 18.

"This proposal is based on information from international, federal and state authorities about the possible impacts of a sea level rise of 0.9m by the end of the century," Mr Love said.

"We need to let people know which areas could potentially be vulnerable and the council needs to work on options for how we can work with the community to find solutions."

Mr Love said the council could consider moves such as changes to its development consent practices and sea-penitiation works.

Also on view: how individuals reduce their carbon footprint. Mr Love said this was in planning for the future. "If we don't reduce our carbon footprint, our carbon footprint will rise and it will be much higher. It is important to make decisions now."

"This proposal is based on information from international, federal and state authorities about the possible impacts of a sea level rise of 0.9m by the end of the century"

- Gosford Council integrated planning manager Eddie Love



Markers to be reviewed next year

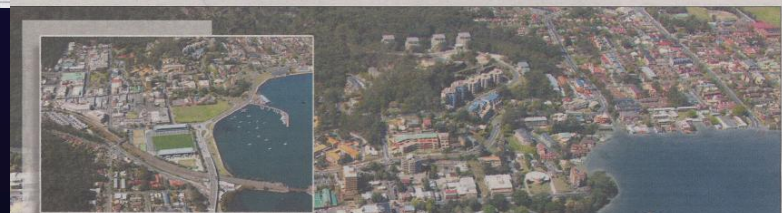
THE problem of flooding from lagoons is being examined.

Gosford Council's natural open space co-ordinator Larry Melican said a review of low lagoons were managed was to be done next year, dependent upon funding.

"The last review of markers was in 1978 and levels in Terrigal Lagoon are monitored through one marker near the bridge," Mr Melican said.

"However, the council is working on a management plan for the lagoons following guidelines outlined in the State Government's estuary management program and hopes to have community consultations on the matter next year before levels are reviewed."

Broaderwater



Gosford CBD today and as it could be in years to come.

On the level

A 3m rise in sea levels would change the face of the Gosford waterfront.

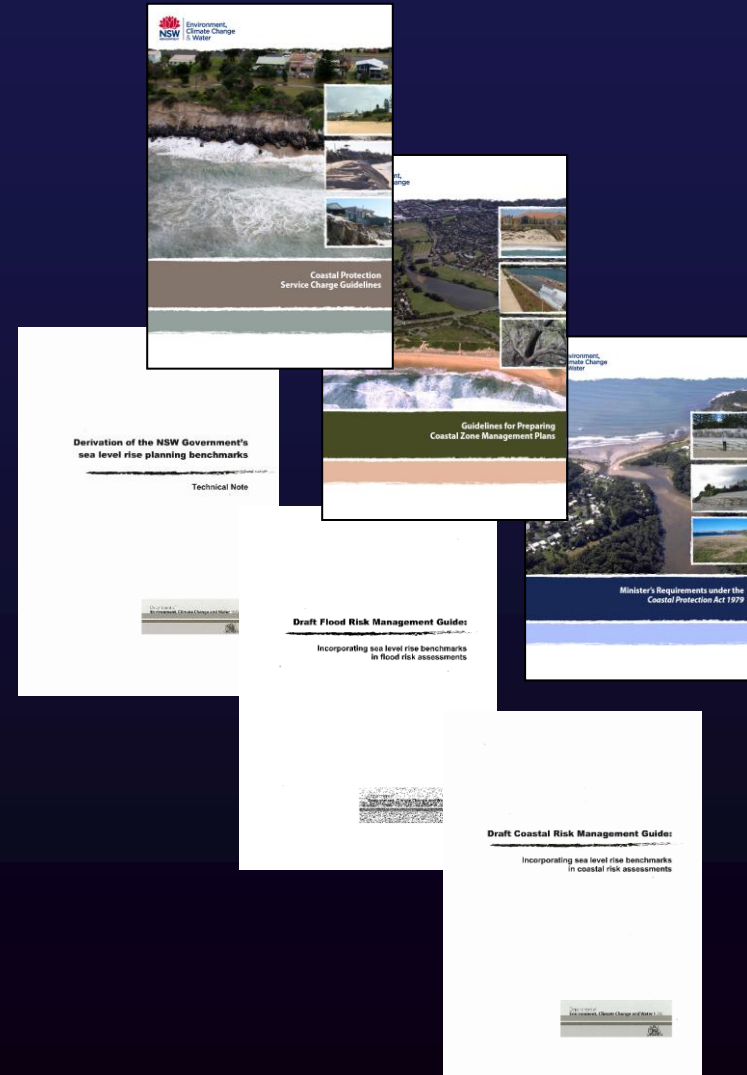
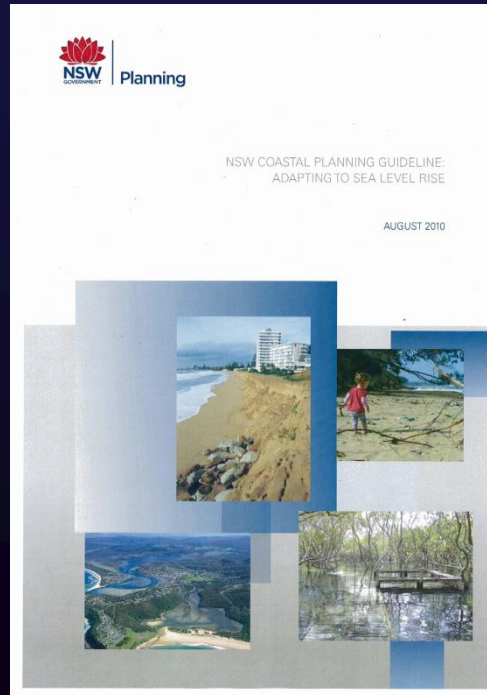
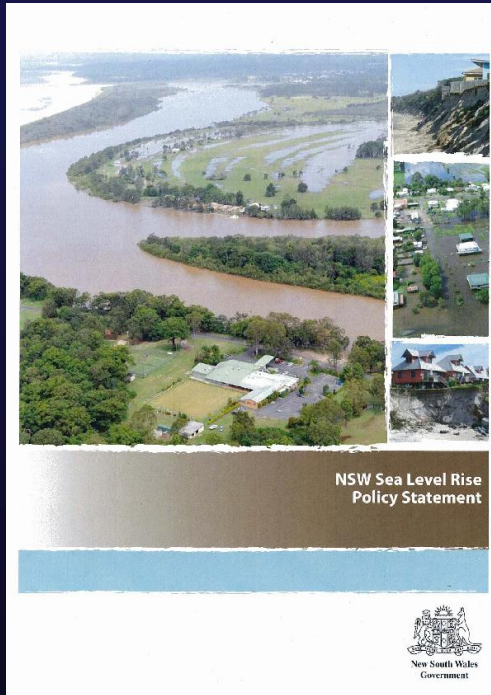
- Key roads like Dane Drive and Baker St would be flooded as The Broadwater advances;
- Low-lying facilities like the sports stadium and the public wharf would be in jeopardy;
- The rail link to Sydney would be at risk and higher bridges would be needed;
- Storm surges during high tides would put much of the CBD at risk;
- 5600 waterfront homes are under direct threat on the coast.

Original picture courtesy: www.expressandvoice.com.au Digitally altered image: BUDDY ROSS

• 17 written submissions received

• Supportive media reporting

Planning with uncertainty +



Coastal Planning for the Gosford LGA

- Section 149(5) notifications placed on 9000 properties (7 May 2010)
- More than 150 written submissions received
- Public confusion as to relevance of Coastal Protection and other Legislation Bill (Act) 2010
- Growing community concern meetings



Planning with uncertainty

CENTRAL COAST Wednesday
Express Advocate
 OOSFORD - PENINSULA
 Phone: 4323 5000 Classifieds: 13 19 79 expressadvocate.com.au Wednesday, October 20, 2010 FREE

Veg out
 Backyard Pumpkin Challenge is on again
 PAGE 13

Last chance
 Final days of the Baby Academy Awards
 PAGE 29

Win tickets
 Indulge your need for speed at the Super X
 PAGE 51

Sea reason

STATE MEMBER FOR GOSFORD



Protesters ask MP to protect homes

CLARE ORSHAM
 ABOUT 200 angry property owners staged a protest outside the office of Gosford State Labor MP Steve Ikin on Wednesday.

Under the banner of "searise", the Coastal Protection Act would be a disaster for the coastline, they say. The proposed coastal protection changes to coastal and near property laws threaten to damage the sandy beaches thousands of property owners have fought to get to the edge of the beach in breach of the law.

Many speakers said climate change was a hoax and alleged the new laws were either a "government tax grab" or a conspiracy to devalue property so the Government could buy it cheaply later on. No Ship campaigner Michelle Mearns was one of a few who openly supported climate change.

She chose the protest meeting to announce her candidature for the coming state election. Ms Mearns described the NSW Coastal Protection Bill as "ill-considered" and "unfair".

The State Government Coastal Protection Bill which increases property owners with fines if they install structures on the beach is said predictions that the sea level would rise by almost a metre in the next 100 years were taking a huge financial toll on property owners.

"We are being belted by climate change 30 years before it happens," Mr Ikin told the meeting.

"These laws are costing people hundreds of thousands of dollars as we all here," he said.

"There's been no consultation and no support. They don't care because it doesn't affect them."

24 Months Interest Free**
\$2890
 John Deere
 PARSONS 43676800
 www.rswmowers.com.au

FREE SLICE OF CAKE
 Sweet Pickle Sauce
HOGS BREATH CAFE
 Temp'd to Temp'd by 10 8154 5190

BONUS 2 LITRES
 of Ultra Can of 4 Litre Brite
\$6.95
 5 Litres \$4.95
 Berger Bros
 40 Gordon Street St.
 Ph: 4341 1331
 inspirations

Express Advocate 13/10/10 PAGE 3 Page 1 of 2

CENTRAL COAST NEWS



About 200 people attended a meeting at Davistown on Saturday morning to discuss sea level rise impacts on Central Coast properties.

Angry owners to fight climate laws

CATHY STUBBS
ANGRY property owners will continue to fight state government planning laws on sea level rises and coastal storm damage.

About 200 people attended a public protest meeting at Davistown RSL Club on Saturday. They plan to form a lobby group, set up a website and hold another public meeting on Saturday at Pittwater Beach Club.

There were two main issues at the meeting of the climate, sea building certificates with information about 1000 homes in sea level rises in 90 years. The certificates are considered crucial when properties are bought or sold.

SEPTICS CLAIM MOVES A TAX GRAB
 THERE was no shortage of climate change sceptics in the audience at Davistown RSL on Saturday.

Many speakers said climate change was a hoax and alleged the new laws were either a "government tax grab" or a conspiracy to devalue property so the Government could buy it cheaply later on. No Ship campaigner Michelle Mearns was one of a few who openly supported climate change.

She chose the protest meeting to announce her candidature for the coming state election. Ms Mearns described the NSW Coastal Protection Bill as "ill-considered" and "unfair".

The State Government Coastal Protection Bill which increases property owners with fines if they install structures on the beach is said predictions that the sea level would rise by almost a metre in the next 100 years were taking a huge financial toll on property owners.

"We are being belted by climate change 30 years before it happens," Mr Ikin told the meeting.

"These laws are costing people hundreds of thousands of dollars as we all here," he said.

"There's been no consultation and no support. They don't care because it doesn't affect them."

CENTRAL COAST Community Newspaper Of The Year News Award 2009
Express Advocate
 OOSFORD - PENINSULA
 Phone: 4323 5000 Classifieds: 13 19 79 expressadvocate.com.au Friday, July 16, 2010 FREE

LIFESTYLE SECTION INSIDE TODAY

Weekend
 your
 AUTHOR FITZSIMONS RETURNS TO HIS PEATS RIDGE ROOTS - PAGE 39

Winning Warrior
 Ex-coast utility stars for Kiwis
 PAGE 76

Tide of protest



Complaints flood in over sea level edict
 ALICIA MCGURISTE

ALMOST 1000 people have signed two petitions protesting against Gosford Council's decision to list their properties as affected by rising sea levels. They say the move will strip thousands of dollars from the value of their properties.

The petitions were started by Davistown Beach owner Pat Allen whose property is one of those affected.

Gosford Council sent letters to 7000 owners of beachside and Estuaries Water properties in May, telling them their homes were likely to be affected by sea level rises of up to a metre over the next 90 years.

Further information provided to community

- Why did Council put SLR information on Section 149 Certificate?
- Why did Council consider it had a Duty of Care?
- What does Section 149(5) of the Environment & Planning Act 1979 actually say?
- What consultation did Council undertake prior to encoding?
- Does Council consult prior to placing a new message on a Planning Certificate?
- What does the s.149(5) message say?
- Will the encoding affect insurance premiums for properties encoded?
- Will the encoding affect the value of properties encoded?





There must be a better way!

**Bad human
communication
leaves us less room
to grow.**

Improving engagement

International Association for Public Participation

- Planning for effective public participation
 - Gain internal commitment
 - Learn from the public
 - Select the level of participation (IAP2 spectrum)
 - Define the process and participation objectives
 - Develop the public participation planning document
- Communications for effective communication
- Techniques for public communication



Improving engagement

Managing the media conversation

- Stay on the front foot – be proactive & prepared
- News “values” – key ingredients that make a news story
- Finding an angle
- Planning your message
- The grab
- Q = A+1
- Forge relationships



Improving internal engagement

- Internal Cross-Directorate Working Group
 - Lead
 - Strategise
 - Communicate



Improving engagement

- Catchments & Coast Committee
- Involve the vocal minority
- Project specific Sub-Committees
- Community engagement strategies



Improving engagement

- Be flexible
- Be responsive
- Be inclusive
- Invest resources



Where to from here?



Thank you

Tim Macdonald

Senior Environment Planning Officer

Gosford City Council

02 4304 7658

tim.macdonald@gosford.nsw.gov.au

www.gosford.nsw.gov.au

