

Nowhere to go but up:

co-creating an adaptation response in Lake Macquarie

Pre Coastal Conference Workshop

12 November 2013



Dr Alice Howe
Manager Sustainability

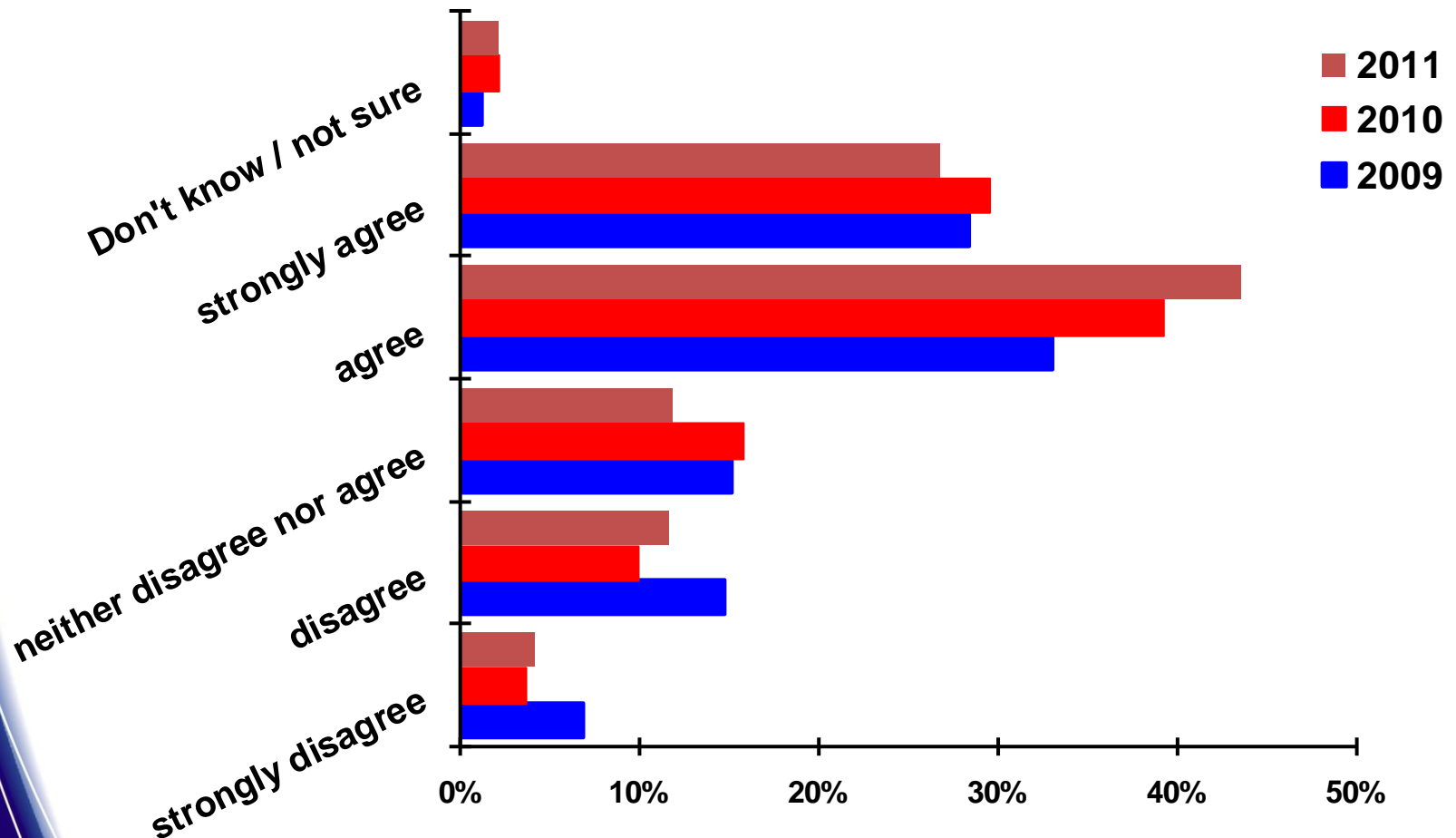
Overview

- Local perceptions of climate change
- Developing our first adaptation plan
- Lessons learned so far
- Where to from here?



Local Perceptions of Climate Change

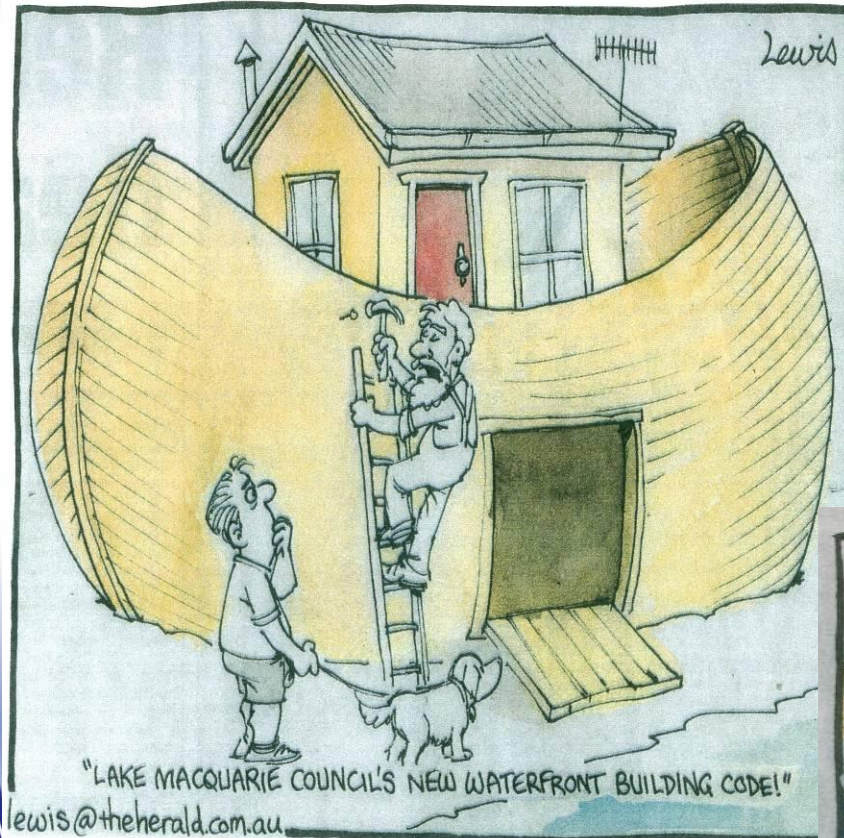
Human activities are causing significant changes to the Earth's climate (2009-2011)



Perceptions of Climate Change (2009)



Perceptions of Climate Change (2011)



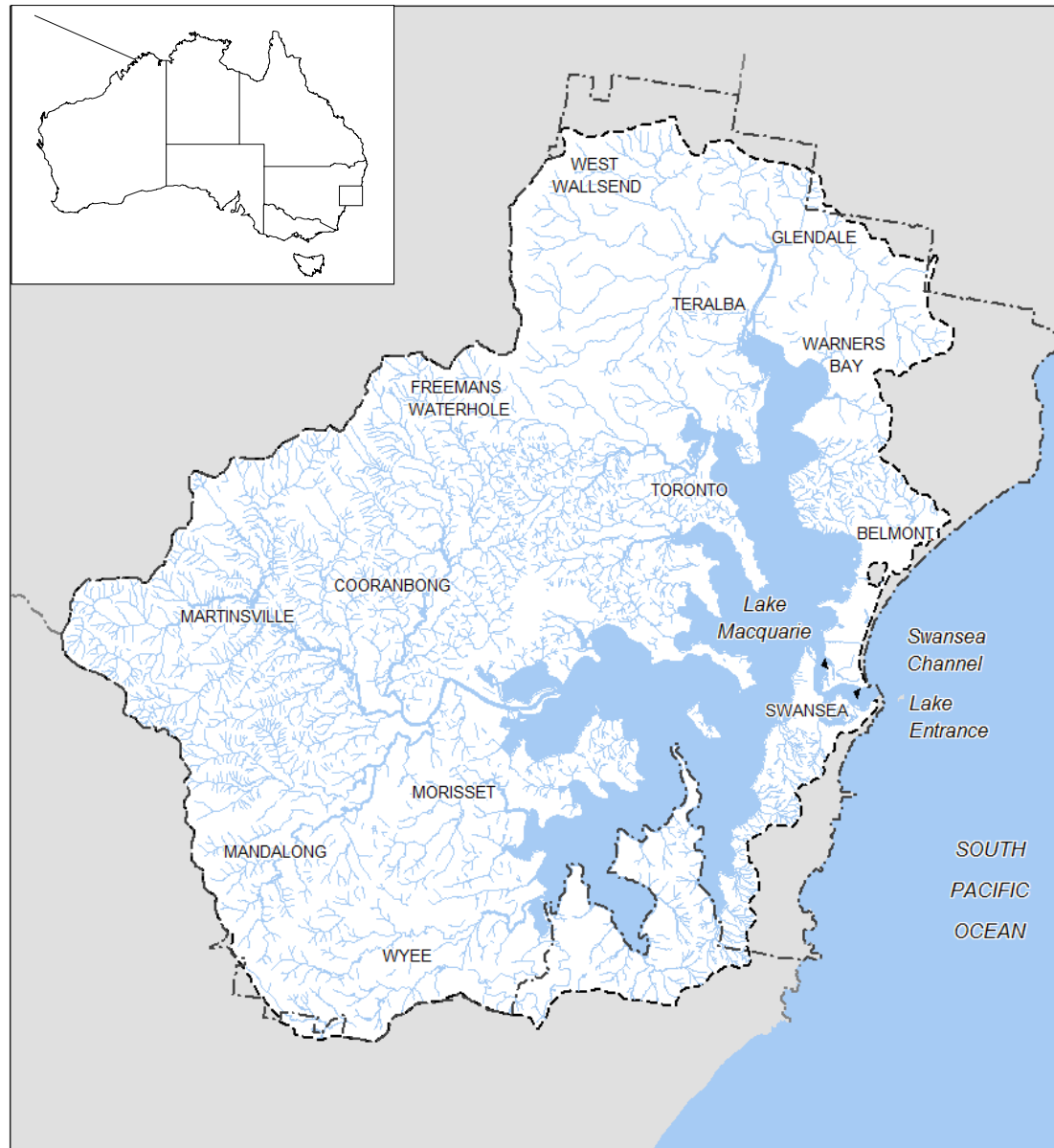
Lake Flood Study & Risk Mgt Plan (2012)

Assessed flood risk

- now
- in 2050 (0.4m)
- in 2100 (0.9m)

Updated SLR Policy (2008) to Flooding and Tidal Inundation Policy (2012)

Commenced adaptation planning



Lake Macquarie Catchment

- Lake Macquarie catchment boundary
- Waterways within Lake Macquarie catchment
- Lake Macquarie City Council boundary

0 4 8

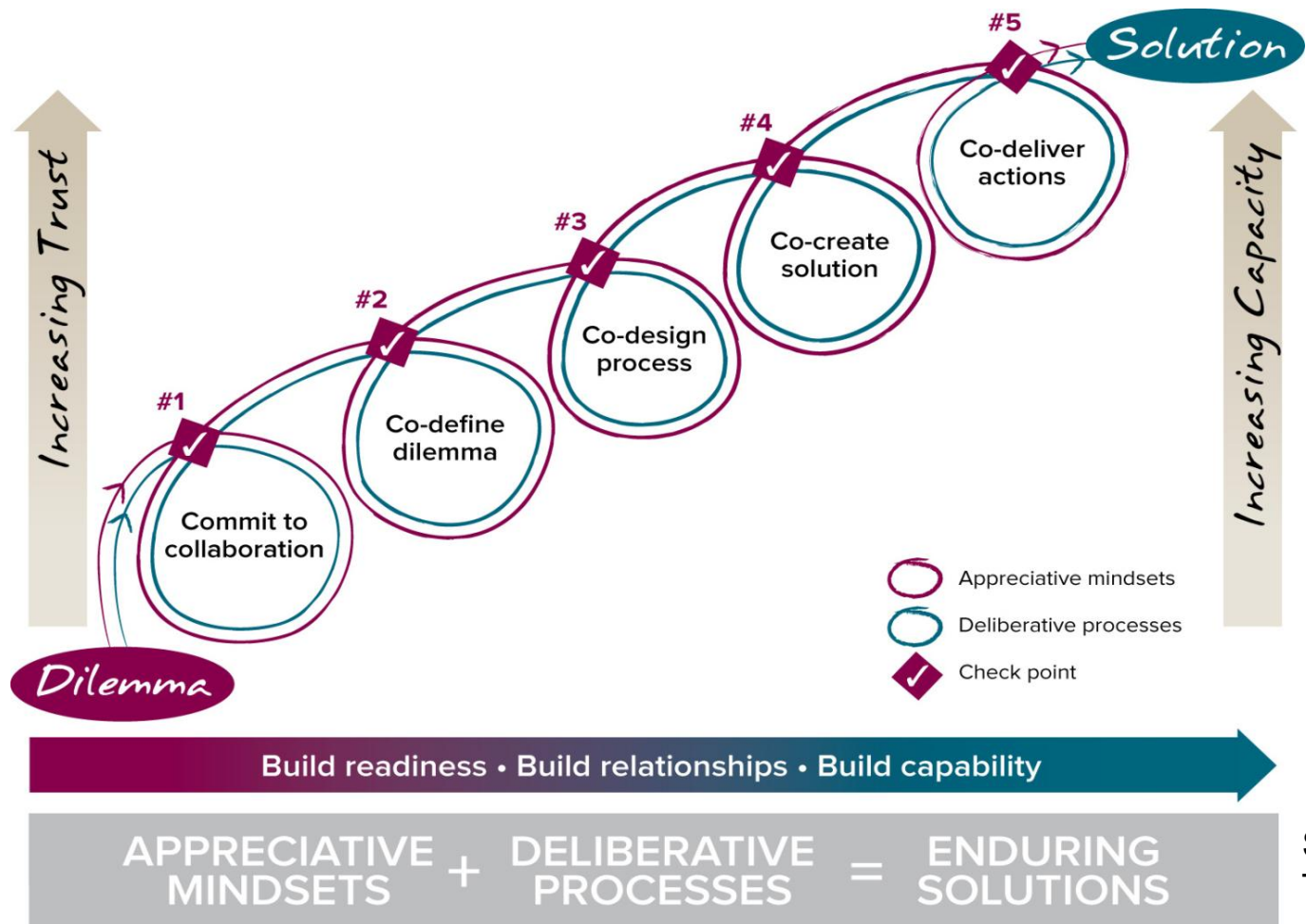
Kilometres

NORTH



Our Approach to Adaptation Planning

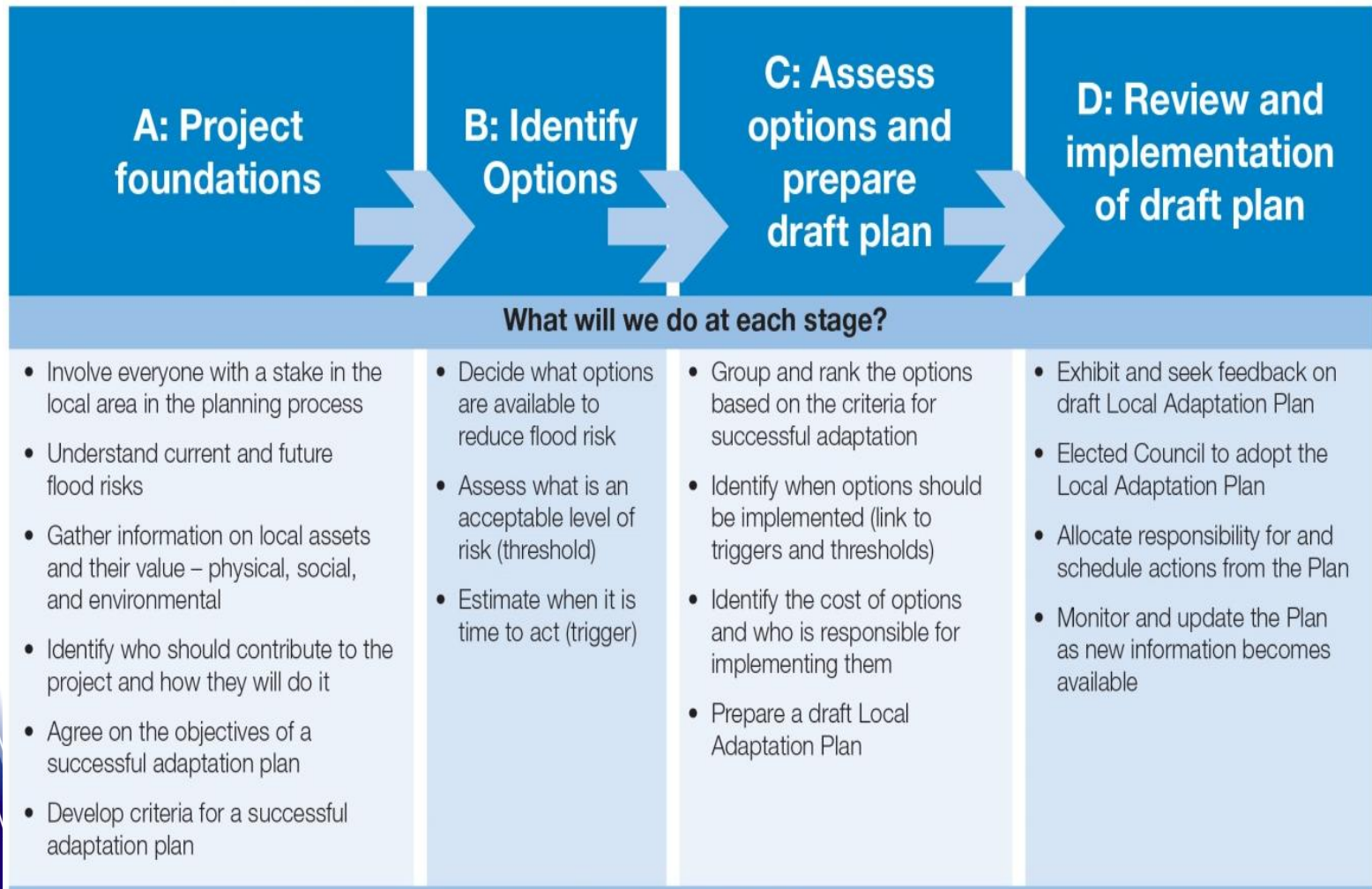
defined city-wide approach to development of local plans to manage current and future flood risk



Source:
Twyfords

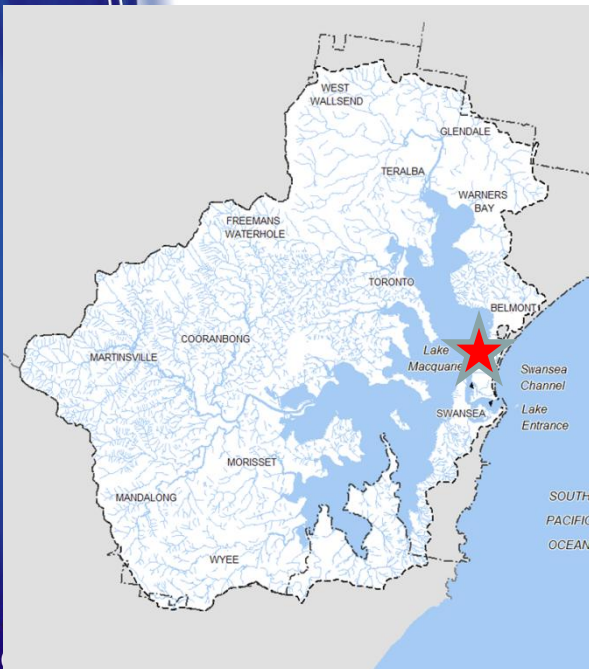
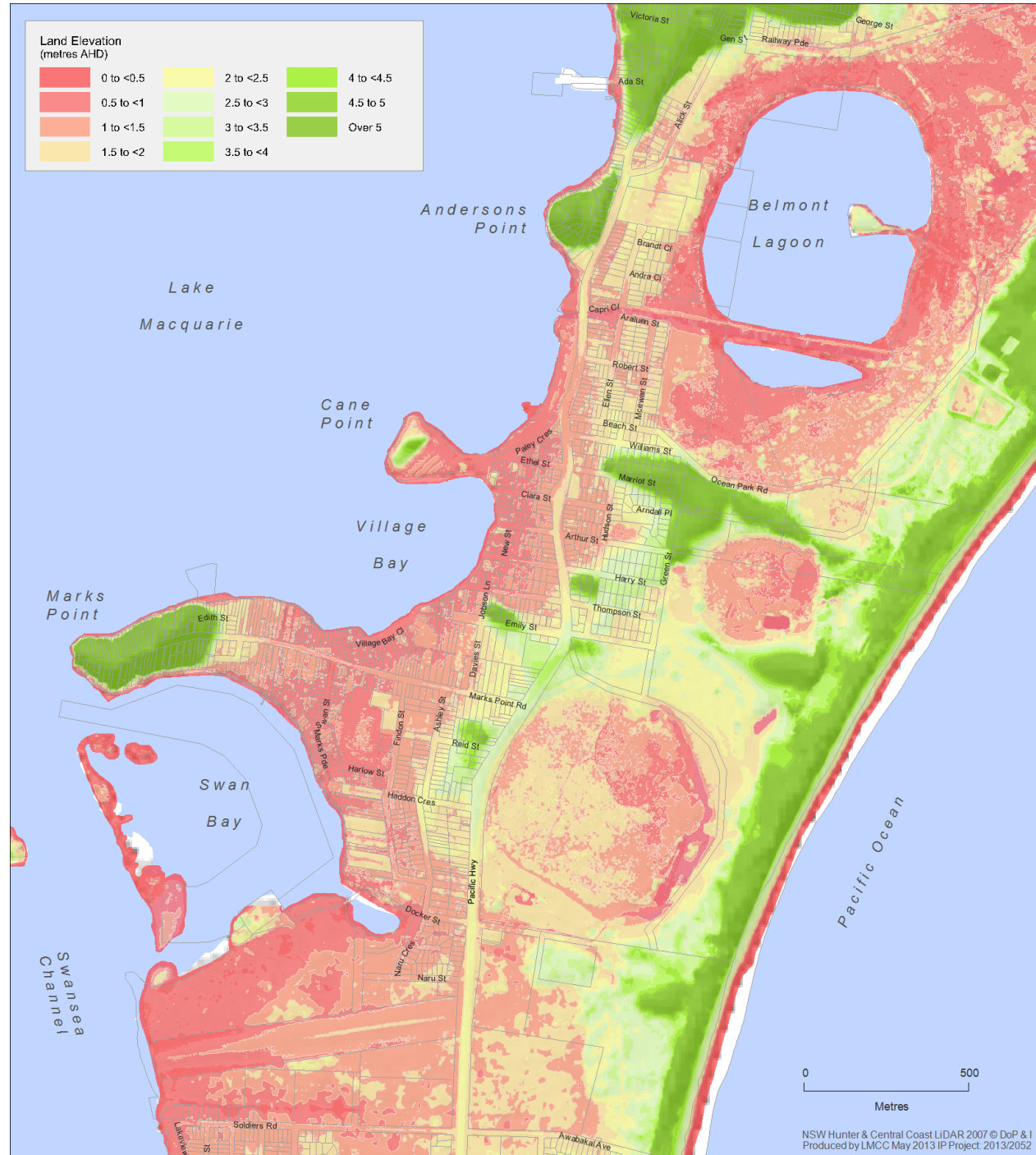
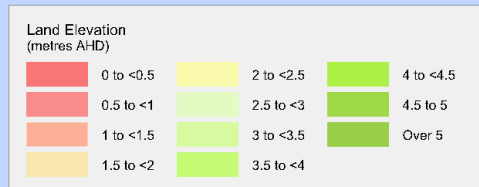
Our Approach to Adaptation Planning

Community Engagement Framework for Local Adaptation Planning



Our First Adaptation Plan Area

Marks Point & Belmont South



What we've learned so far....

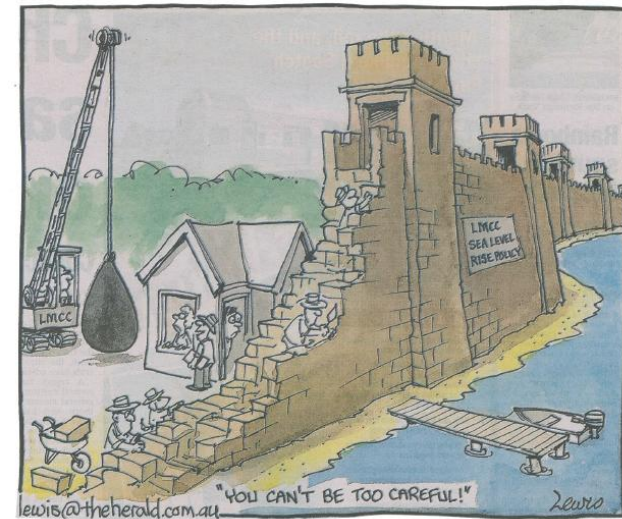
The Good

- support from Council's Mayor, senior management and majority of elected Council
- commitment to co-design an adaptation response
- incredibly dedicated staff
- one-on-one conversations
- acknowledging the concerns of individuals
- proactive investigation of those concerns

What we've learned so far....

The Bad

- increasing insurance premiums
- lull in the housing market
- varying perceptions of flood risk
- misconceptions about planning controls
- legitimate concerns from residents about double standards



What we've learned so far....

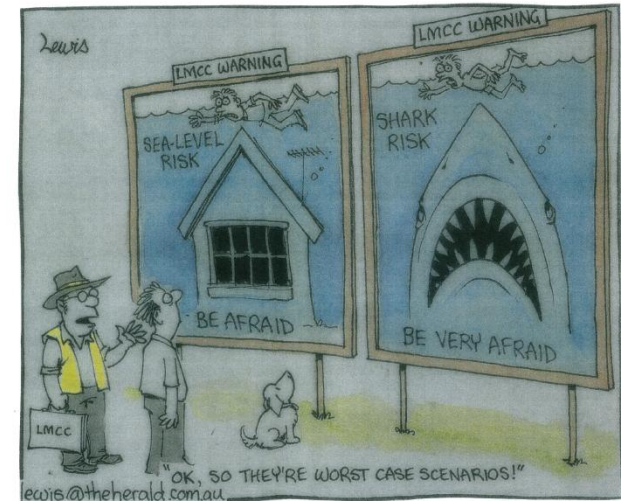
The Ugly

- overlap with Federal election campaign
- involvement of Central Coast interests
- unhelpful media coverage
- the mob at the pub and in the paddock



Where to from here?

- continue to proactively engage with local people
- complete our first adaptation plan
 - what level of service is the local community willing to accept?
 - at what point is adaptation required?
 - who will pay for adaptation responses?
- apply consistent planning principles to all asset classes
 - what is the appropriate flood design standard?
 - what is the appropriate asset life?



Where to from here?

- contribute towards consistent planning approach with other coastal councils and state government
- work with the new NSW adaptation hub
- advocate for policy reform to provide wider range of economic and planning instruments for adaptation
- persevere!

